

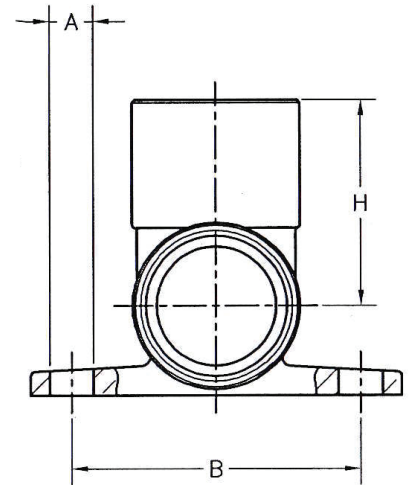
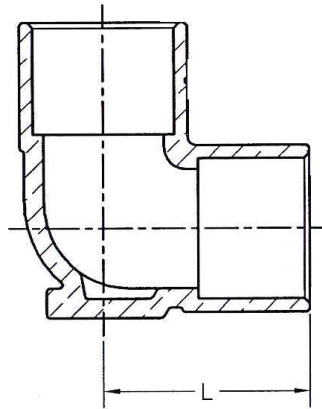
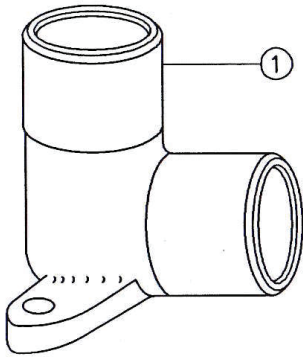
# SUBMITTAL DATA SHEET

No-Lead  
Brass Drop Ear Elbow - 72101S

SWT x SWT



A.Y. McDonald Mfg. Co. No-Lead Drop Ear Elbows creates a 90° connection and allows the transition from Pex tubing to threaded pipe. Drop ear elbows are secured to a stud behind the wall, using the mounting 'ears' which have holes in them. Typically used for installing shower arms and tub spouts, and for use in potable water applications.



## Dimensions

| Size        | A    | B    | H    | L    |
|-------------|------|------|------|------|
| 1/2" x 1/2" | 0.20 | 1.29 | 0.92 | 0.92 |

## Materials

| No. | Part | Material               |
|-----|------|------------------------|
| 1   | Body | No-Lead Brass (C46400) |

## SUBMITTAL INFORMATION

- Available Size: 1/2"
- Two Ear Design
- Sweat end connections comply with ASME B16.8

NO-LEAD: The weighted average of the wetted surface of this no-lead product contacted by consumable water contains less than one quarter of one percent (0.25%) lead.



**A.Y. McDonald Mfg. Co.**  
4800 Chavenelle Rd  
Dubuque, IA 52002

**Toll Free: 1-800-292-2737**  
sales@aymcdonald.com  
aymcdonald.com

A.Y. McDonald considers the information on this assembly drawing correct when published. Item and option availability, including specifications, are subject to change without notice.

**Submitted by:**