

# SUBMITTAL DATA SHEET

Corporation Stop – 732060

AWWA/CC x Inside Driving

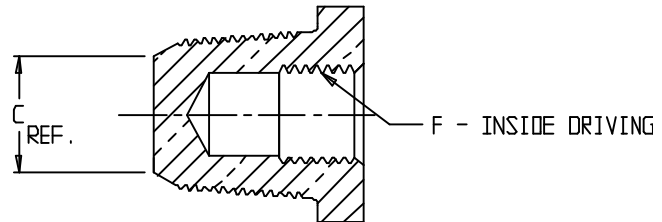
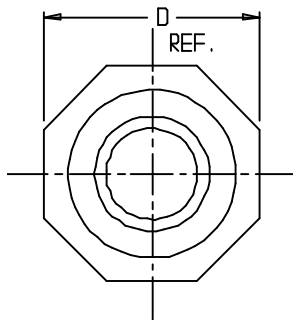
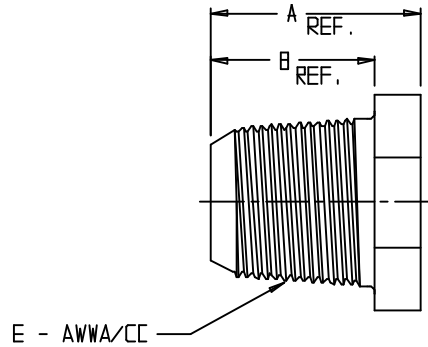


PLATE NO.	SIZE	A	B	C	D	E	F
732060	5/8 x 5/8	1.58	1.24	.78	1.63	5/8	5/8
732060	3/4 x 5/8	1.58	1.24	.87	1.63	3/4	5/8
732060	1 x 5/8	1.66	1.32	1.13	1.63	1	5/8

## SUBMITTAL INFORMATION

- Manufactured in compliance with ANSI/AWWA C800 (latest revision)
- Brass components in contact with potable water conform to ASTM B584, UNS C89833 (latest revision) and identified with “NL”
- Certified to NSF/ANSI 61 and NSF/ANSI 372
- Brass components not in contact with potable water conform to ASTM B62 and ASTM B584, UNS C83600 -85-5-5-5 (latest revision)
- Large wrench flats provided for proper installation



**A.Y. McDonald Mfg. Co.**  
4800 Chavenelle Rd  
Dubuque, IA 52002

**Toll Free: 1-800-292-2737**  
sales@aymcdonald.com  
[aymcdonald.com](http://aymcdonald.com)

A.Y. McDonald considers the information on this assembly drawing correct when published. Item and option availability, including specifications, are subject to change without notice.

**Submitted by:**