

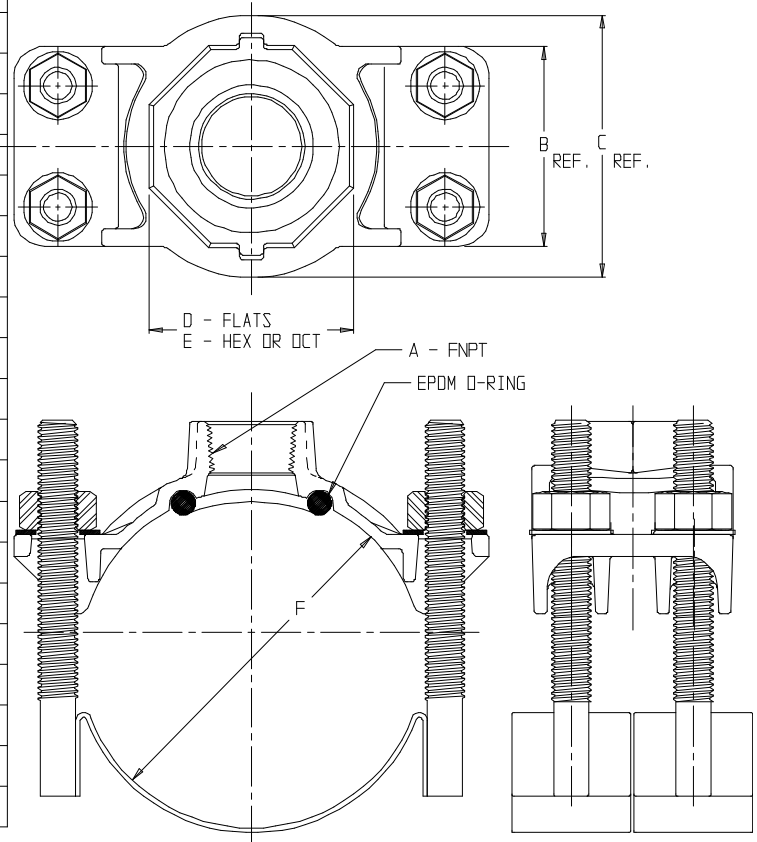
# SUBMITTAL DATA SHEET

## SS Strap Saddle - 3856

C900 PVC x FNPT



| MODEL | SIZE       | A     | B    | C    | D    | E   | F             |
|-------|------------|-------|------|------|------|-----|---------------|
| 3856  | 4 X 3/4    | 3/4   | 3.19 | 3.19 | 1.69 | HEX | 4.74 - 5.40   |
| 3856  | 4 X 1      | 1     | 3.19 | 3.19 | 1.69 | HEX | 4.74 - 5.40   |
| 3856  | 4 X 1 1/2  | 1 1/2 | 3.19 | 4.19 | 3.10 | OCT | 4.74 - 5.40   |
| 3856  | 4 X 2      | 2     | 3.19 | 4.19 | 3.10 | OCT | 4.74 - 5.40   |
| 3856  | 6 X 3/4    | 3/4   | 3.19 | 3.19 | 1.69 | HEX | 6.84 - 7.50   |
| 3856  | 6 X 1      | 1     | 3.19 | 3.19 | 1.69 | HEX | 6.84 - 7.50   |
| 3856  | 6 X 1 1/2  | 1 1/2 | 3.19 | 4.19 | 3.10 | OCT | 6.84 - 7.50   |
| 3856  | 6 X 2      | 2     | 3.19 | 4.19 | 3.10 | OCT | 6.84 - 7.50   |
| 3856  | 8 X 3/4    | 3/4   | 3.19 | 3.19 | 1.69 | HEX | 8.99 - 9.67   |
| 3856  | 8 X 1      | 1     | 3.19 | 3.19 | 1.69 | HEX | 8.99 - 9.67   |
| 3856  | 8 X 1 1/2  | 1 1/2 | 3.19 | 4.19 | 3.10 | OCT | 8.99 - 9.67   |
| 3856  | 8 X 2      | 2     | 3.19 | 4.19 | 3.10 | OCT | 8.99 - 9.67   |
| 3856  | 10 X 3/4   | 3/4   | 3.19 | 3.19 | 1.69 | HEX | 11.04 - 12.12 |
| 3856  | 10 X 1     | 1     | 3.19 | 3.19 | 1.69 | HEX | 11.04 - 12.12 |
| 3856  | 10 X 1 1/2 | 1 1/2 | 3.19 | 4.19 | 3.10 | OCT | 11.04 - 12.12 |
| 3856  | 10 X 2     | 2     | 3.19 | 4.19 | 3.10 | OCT | 11.04 - 12.12 |
| 3856  | 12 X 3/4   | 3/4   | 3.19 | 3.19 | 1.69 | HEX | 13.14 - 14.58 |
| 3856  | 12 X 1     | 1     | 3.19 | 3.19 | 1.69 | HEX | 13.14 - 14.58 |
| 3856  | 12 X 1 1/2 | 1 1/2 | 3.19 | 4.19 | 3.10 | OCT | 13.14 - 14.58 |
| 3856  | 12 X 2     | 2     | 3.19 | 4.19 | 3.10 | OCT | 13.14 - 14.58 |



\*\* ALL STAINLESS STEEL STRAPS ARE 1.88" WIDE.  
TWO STRAPS (WITH 2 STUDS WELDED ON) PER ASSEMBLY.

### SUBMITTAL INFORMATION

- Manufactured in compliance with ANSI/AWWA C800 (latest revision)
- Brass components conform to ASTM B62 and ASTM B584, UNS C83600 -85-5-5-5 (latest revision)
- Certified to NSF/ANSI 61
- 304L Stainless Steel strap(s) and studs. Stainless steel nuts (PTFE coated) and washers
- EPDM o-ring
- Pipe and tap size, and thread type identified on saddle
- Outlet boss with large wrench flats



**A.Y. McDonald Mfg. CO.**  
4800 Chavenelle Rd  
Dubuque, IA 52002

**Toll Free: 1-800-292-2737**  
sales@aymcdonald.com  
[aymcdonald.com](http://aymcdonald.com)

A.Y. McDonald considers the information on this assembly drawing correct when published. Item and option availability, including specifications, are subject to change without notice.

**Submitted by:**