

# SUBMITTAL DATA SHEET



## NL Meter Coupling – 74619

Male Meter Thread x MNPT

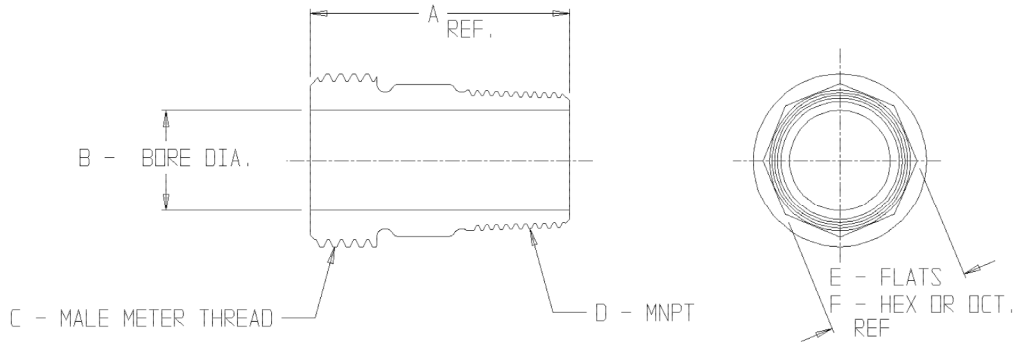


PLATE NO.	SIZE	A	B	C	D	E	F
74619	5/8	1.93	.64	5/8	3/4	1.06	OCT
74619	5/8 X 1/2	1.81	.64	5/8	1/2	1.06	HEX
74619	3/4	1.93	.75	3/4	3/4	1.06	OCT
74619	3/4 X 1/2	1.93	.75	3/4	1/2	1.38	HEX
74619	3/4 X 2.43	2.43	.75	3/4	3/4	1.03	OCT
74619	3/4 X 1 X 2.18	2.18	.75	3/4	1	1.03	OCT
74619	1	2.27	1.00	1	1	1.24	OCT
74619	1 X 1 1/4 X 2.12	2.12	1.00	1	1 1/4	1.50	OCT
74619	1 1/2	2.05	1.50	1 1/2	1 1/2	1.97	HEX
74619	2	2.95	2.00	2	2	2.48	HEX

### SUBMITTAL INFORMATION

- Manufactured in compliance with ANSI/AWWA C800 (latest revision)
- Brass components in contact with potable water conform to ASTM B584, UNS C89833 (latest revision) and identified with “NL”
- Certified to NSF/ANSI 61 and NSF/ANSI 372
- Brass components not in contact with potable water conform to ASTM B62 and ASTM B584, UNS C83600 -85-5-5-5 (latest revision)
- Large wrench area provided for proper installation



**A.Y. McDonald Mfg. Co.**  
4800 Chavenelle Rd  
Dubuque, IA 52002

**Toll Free: 1-800-292-2737**  
sales@aymcdonald.com  
[aymcdonald.com](http://aymcdonald.com)

A.Y. McDonald considers the information on this assembly drawing correct when published. Item and option availability, including specifications, are subject to change without notice.

**Submitted by:**