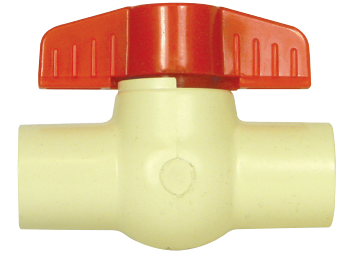


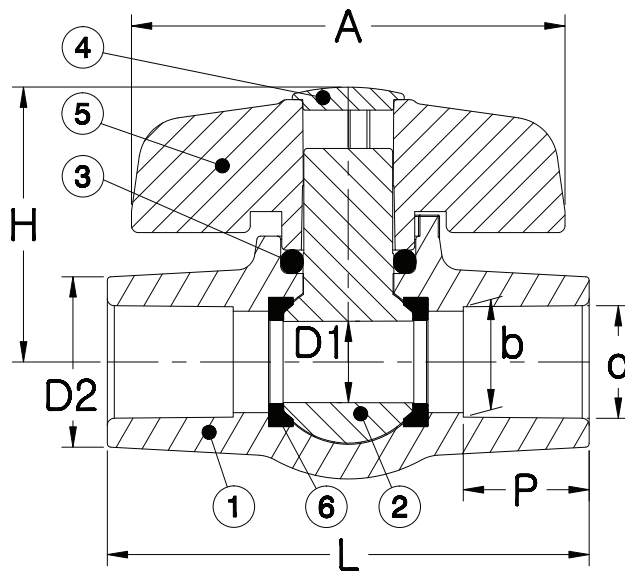
SUBMITTAL DATA SHEET

CPVC - CTS Ball Valves
Socket Ends – 2062

Solvent x Solvent



A.Y. McDonald Mfg. Co. CPVC Ball Valves have the same features and applications as our 2060 Series, but because of their high heat resistance, are suitable for hot water systems.



Dimensions

Size	D1	d	b	P	D2	L	A	H
1/2"	0.492	0.633	0.619	0.500	0.965	2.701	2.441	1.327
3/4"	0.716	0.884	0.870	0.700	1.248	3.120	2.807	1.791
1"	0.748	1.135	1.121	0.900	1.512	3.551	2.988	2.185

Materials

No.	Part	Material
1	Body	CPVC
2	Ball	CPVC
3	O-Ring	EPDM
4	Cap	ABS
5	Handle	ABS
6	Seat	PTFE

SUBMITTAL INFORMATION

- Schedule 80 Specification
- Sizes: 1/2", 3/4", 1"
- Fits schedule 40 & 80 PVC Pipe

Temperature Ratings:

- 150 PSI Non-Shock Working Pressure to 73°F
- 100 PSI Non-Shock Working Pressure to 180°F
- NSF/ANSI 61

NO-LEAD: The weighted average of the wetted surface of this no-lead product contacted by consumable water contains less than one quarter of one percent (0.25%) lead.



A.Y. McDonald Mfg. Co.
4800 Chavenelle Rd
Dubuque, IA 52002

Toll Free: 1-800-292-2737
sales@aymcdonald.com
aymcdonald.com

A.Y. McDonald considers the information on this assembly drawing correct when published. Item and option availability, including specifications, are subject to change without notice.

Submitted by: