



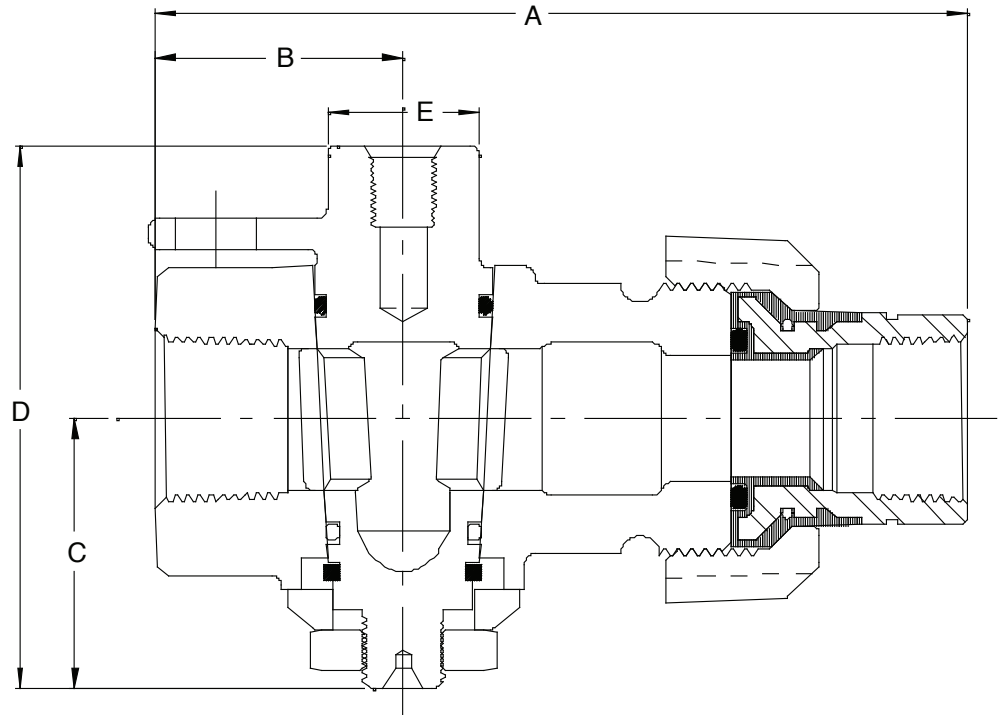
SUBMITTAL DATA

6276 SERIES - IRON BODY GAS PLUG VALVE FEATURES

MADE IN THE USA

SIZE	A	B	C	D	E	WT lbs.
3/4	5 1/8	1 17/32	1 5/8	3 15/32	1	2.5
1	5 3/4	1 11/16	1 7/8	3 11/16	1 1/8	3.5
1 x 3/4	6 1/8	2 1/2	1 5/8	3 15/32	1	3.1
1 1/4	6 1/2	2 3/16	2 3/8	4 11/16	1 3/8	5.3
1 1/4x3/4	6 1/8	2 1/2	1 5/8	3 15/32	1	3.1
2	7 7/8	2 13/16	2 15/16	5 13/16	1 7/8	12.4

A.Y. McDONALD CONSIDERS THE INFORMATION ON THIS ASSEMBLY DRAWING CORRECT WHEN PUBLISHED. ITEM AND OPTION AVAILABILITY, INCLUDING SPECIFICATIONS, ARE SUBJECT TO CHANGE WITHOUT NOTICE. PLEASE VERIFY THAT PRODUCT INFORMATION IS CURRENT.



- A.Y. McDonald's Iron Body Brass Plug Valve is designed and tested to comply with ANSI/ASME B16.33 American National Standard for "Manually Operated Metallic Gas Valves for use in Gas Piping Systems up to 125 PSIG".
- Pressure rating is 175 PSIG.
- Precision machined to assure a precise match between the body and the plug.
- Each valve is factory lubricated and suitable for use with natural, manufactured and LP gases.
- 175 PSIG valves can be relubricated while in service and under pressure. This renews the grease seal to a like new condition, adding to the life of the valve.
- Unless otherwise noted, valves are equipped with top and bottom O-rings for added security against external leakage.
- Tamper-resistant (tamperproof) design prevents disassembly with normal household tools.
- The on/off turning torques are controlled at assembly by using torque machines to set the bottom nut which is also staked in place to maintain this torque.
- Pressure may be applied in either direction as A.Y. McDonald's Plug Valve is a non-directional valve.
- The 90° rotation provides complete shut-off from open position. Valve can be rotated full 360°.
- Locking fits industry-standard, separately-supplied locking devices such as the "casket lock".
- Port openings sized to accommodate the best known stop changers.
- Temperature Range: -20° to +150°F.
- N.P.T. x Insulated union. F.I.P. thread tail piece per ANSI/ASME B1.20.1.
- Fire safe design.

A.Y. McDONALD MFG. CO. • P.O. BOX 508 • DUBUQUE, IA 52004-0508
800-292-2737 • FAX 800-832-9296 • sales@aymcdonald.com • www.aymcdonald.com