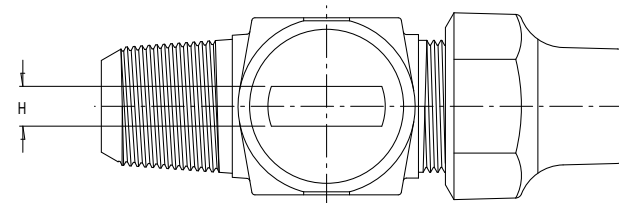
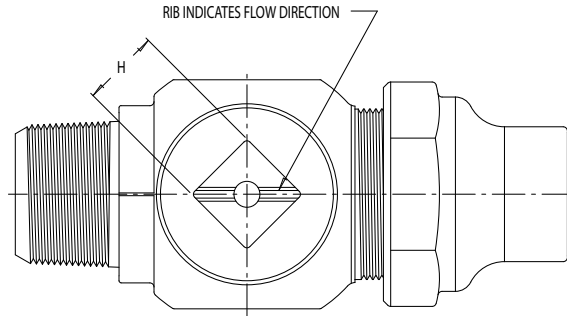




SUBMITTAL DATA

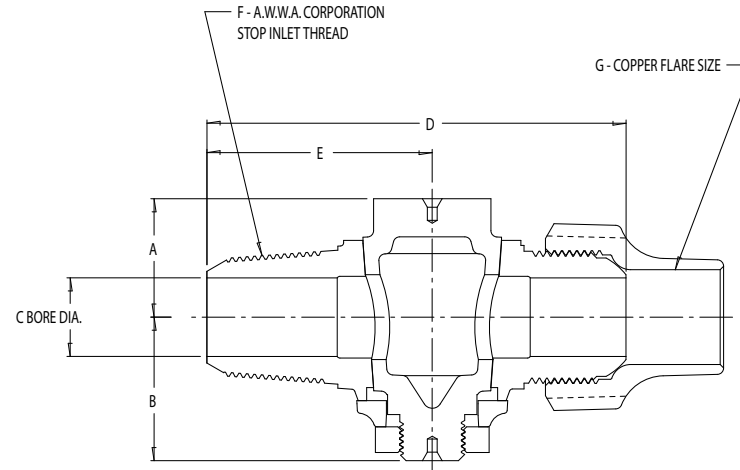
4701 MODEL CORPORATION STOP - AWWA X FLARE

A.Y. McDONALD CONSIDERS THE INFORMATION ON THIS ASSEMBLY DRAWING CORRECT WHEN PUBLISHED. ITEM AND OPTION AVAILABILITY, INCLUDING SPECIFICATIONS, ARE SUBJECT TO CHANGE WITHOUT NOTICE. PLEASE VERIFY THAT PRODUCT INFORMATION IS CURRENT.



*NOTE: 1 1/2 & 2 INCH PLUGS HAVE SQUARE HEAD WRENCHING SURFACES

PART NO.	MODEL	SIZE	A	B	C	D	E	F	G	H
4110-115	4701	1/2	1.12	1.16	.50	3.34	1.73	1/2	1/2	.34
4111-119	4701	5/8 X 3/4	1.10	1.23	.63	3.66	2.02	5/8	3/4	.34
4112-128	4701	3/4	1.13	1.37	.75	4.00	2.15	3/4	3/4	.38
4112-130	4701	3/4 X 1	1.13	1.37	.75	4.15	2.15	3/4	1	.38
4113-127	4701	1	1.41	1.48	1.00	4.57	2.40	1	1	.38
4114-124	4701	1 1/4	1.67	1.77	1.25	5.63	2.94	1 1/4	1 1/4	.44
4115-125	4701	1 1/2*	1.98	2.28	1.50	6.35	3.35	1 1/2	1 1/2	1.13
4115-143	4701	1 1/2 X 2*	1.98	2.28	1.50	6.87	3.31	1 1/2	2	1.13
4116-124	4701	2*	2.39	2.41	2.00	7.77	3.97	2	2	1.25



- All cast brass conforms to AWWA Standard C800-01 (ASTM B-62, UNS C83600 - 85-5-5-5).
- Throughway dimensions shall be no smaller than the normal size of the valve.
- Valves are designed so they can be installed under pressure with standard tapping and drilling machine and insertion tools.
- Threads conform to current AWWA C800-01 standard.
- Body design includes heavy wrench flats for proper installation.

- 1" and smaller meet 100 PSIG water working pressure requirement of AWWA C800-01.
- 1 1/2" thru 2" meet 80 PSIG water working pressure requirement of AWWA C800-01.
- Full 360° rotation.
- Flare tube nut has large hex wrenching surfaces and long tube support body.

□ "L" after model number denotes valve less the Flare Nut (Example: 4701L 1/2").

PREPARED FOR: _____

SUBMITTED BY: _____

DATE: _____

A.Y. McDONALD MFG. CO. • P.O. BOX 508 • DUBUQUE, IA 52004-0508
800-292-2737 • FAX 800-832-9296 • sales@aymcdonald.com • www.aymcdonald.com