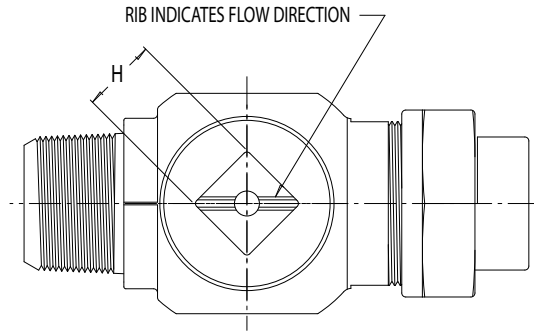




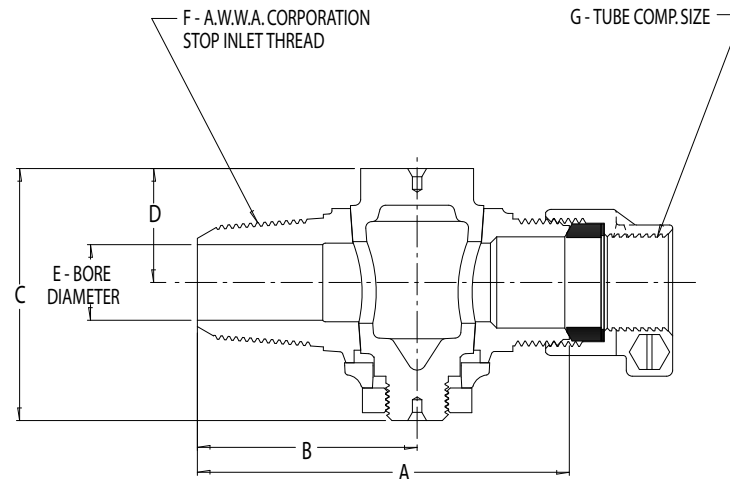
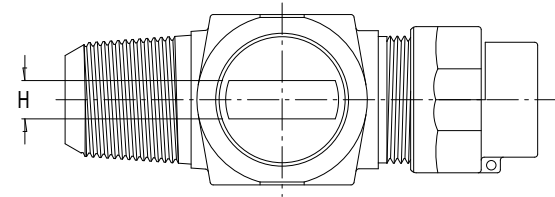
# SUBMITTAL DATA

## 4701-22 CORPORATION STOP - PLUG VALVE



\*NOTE: 1 1/2 & 2 INCH PLUGS HAVE SQUARE HEAD WRENCHING SURFACES

PART NO.	MODEL	SIZE	A	B	C	D	E	F	G	H
4130-119	4701-22	5/8 X 3/4	3.38	2.02	2.33	1.10	.63	5/8	3/4	.34
4140-107	4701-22	3/4	3.66	2.15	2.50	1.13	.75	3/4	3/4	.38
4141-143	4701-22	3/4 X 1	3.87	2.15	2.50	1.13	.75	3/4	1	.38
4141-130	4701-22	1	4.25	2.40	2.89	1.41	1.00	1	1	.38
4142-038	4701-22	1 X 1 1/4	4.54	2.40	2.89	1.41	1.00	1	1 1/4	.38
4141-146	4701-22	1 1/4	5.31	2.94	3.44	1.67	1.25	1 1/4	1 1/4	.44
4141-159	4701-22	1 1/2	6.23	3.35	4.26	1.98	1.50	1 1/2	1 1/2	*1.13
4141-172	4701-22	2	7.30	3.97	4.80	2.39	2.00	2	2	*1.25



- All cast brass conforms to latest AWWA Standard C800 (ASTM B-62, UNS C83600 – 85-5-5-5).
- Throughway dimensions shall be no smaller than the nominal size of the valve.
- Valves are designed so they can be installed under pressure with standard tapping and drilling machine and insertion tools.
- Threads conform to current AWWA C-800 standard.
- Body design includes heavy wrench flats for proper installation.
- Rectangular operating head will be aligned such that the long side will indicate the direction of flow.
- 100 PSIG water working pressure for valves up to 1".
- 80 PSIG water working pressure for 1 1/4" - 2" valves.

- 360° rotation.
- Compression type bodies include internal pipe stop.
- Compression assembly includes EPDM rubber sealing gasket and stainless steel set screw.
- Designed for use with potable water.

A.Y. McDONALD CONSIDERS THE INFORMATION ON THIS ASSEMBLY DRAWING CORRECT WHEN PUBLISHED. ITEM AND OPTION AVAILABILITY, INCLUDING SPECIFICATIONS, ARE SUBJECT TO CHANGE WITHOUT NOTICE. PLEASE VERIFY THAT PRODUCT INFORMATION IS CURRENT.

**A.Y. McDONALD MFG. CO. • P.O. BOX 508 • DUBUQUE, IA 52004-0508**  
**800-292-2737 • FAX 800-832-9296 • sales@aymcdonald.com • www.aymcdonald.com**

**PREPARED FOR:** \_\_\_\_\_

**SUBMITTED BY:** \_\_\_\_\_

**DATE:** \_\_\_\_\_