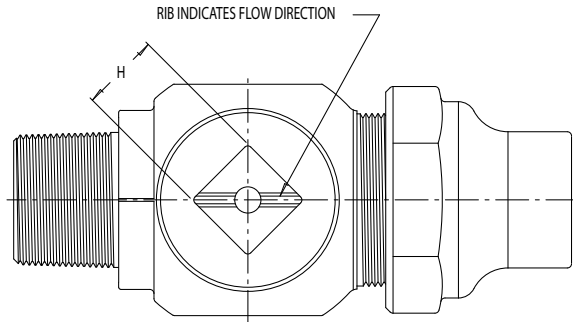




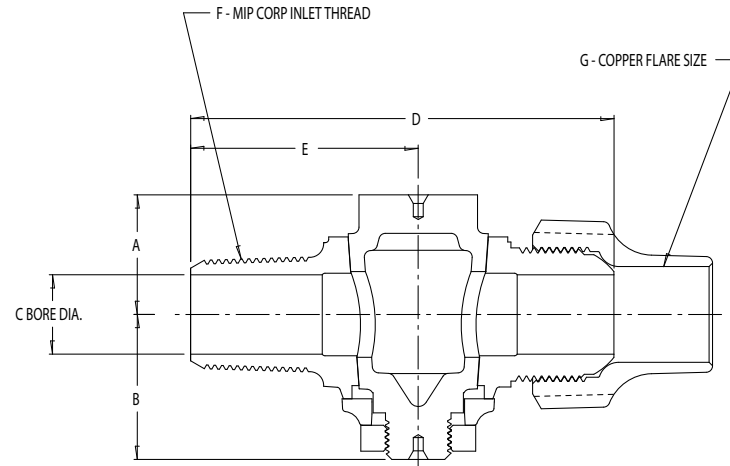
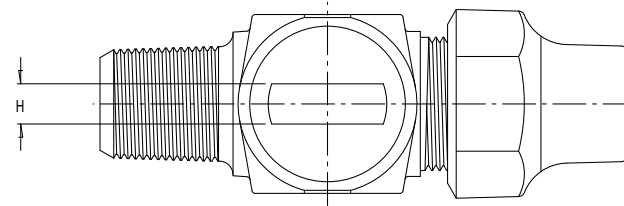
SUBMITTAL DATA

4704 - CORPORATION STOP - PLUG VALVE



*NOTE: 1 1/2 & 2 INCH PLUGS HAVE SQUARE HEAD WRENCHING SURFACES

PART NO.	MODEL	SIZE	A	B	C	D	E	F	G	H
4110-123	4704	1/2	1.12	1.16	.50	3.34	1.73	1/2	1/2	.34
4112-138	4704	3/4	1.13	1.37	.75	4.00	2.15	3/4	3/4	.38
4112-163	4704	3/4 X 1	1.13	1.37	.75	4.15	2.15	3/4	1	.38
4113-135	4704	1	1.41	1.48	1.00	4.57	2.40	1	1	.38
4114-132	4704	1 1/4	1.67	1.77	1.25	5.63	2.94	1 1/4	1 1/4	.44
4115-133	4704	1 1/2	1.98	2.28	1.50	6.35	3.35	1 1/2	1 1/2	*1.13
4116-132	4704	2	2.39	2.41	2.00	7.77	3.97	2	2	*1.25



- All cast brass conforms to AWWA Standard C800 (ASTM B-62, UNS C83600 – 85-5-5-5).
- Throughway dimensions shall be no smaller than the nominal size of the valve.
- Valves are designed so they can be installed under pressure with standard tapping and drilling machine and instertion tools.
- Threads conform to current AWWA C800 standard.
- Body design includes heavy wrench flats for proper installation.
- 1" and smaller meet 100 PSIG water working pressure requirement of AWWA C800-01.
- 360° rotation.

- 1 1/2" thru 2" meet 80 PSIG water working pressure requirement of AWWA C800.
- Flare tube nut has large hex wrenching surfaces and long tube support body.
- * "L" after model number denotes valve less the Flare Nut.

A.Y. McDONALD CONSIDERS THE INFORMATION ON THIS ASSEMBLY DRAWING CORRECT WHEN PUBLISHED. ITEM AND OPTION AVAILABILITY, INCLUDING SPECIFICATIONS, ARE SUBJECT TO CHANGE WITHOUT NOTICE. PLEASE VERIFY THAT PRODUCT INFORMATION IS CURRENT.

PREPARED FOR: _____

SUBMITTED BY: _____

DATE: _____

A.Y. McDONALD MFG. CO. • P.O. BOX 508 • DUBUQUE, IA 52004-0508
800-292-2737 • FAX 800-832-9296 • sales@aymcdonald.com • www.aymcdonald.com