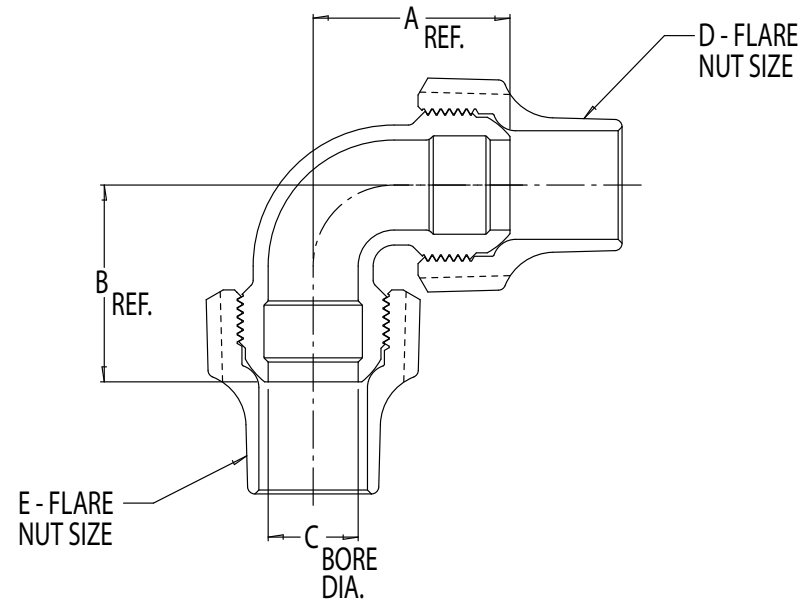




SUBMITTAL DATA

4761 SERIES - 1/4 BEND - FLARE X FLARE

PART NO.	MODEL	SIZE	A	B	C	D	E
4120-146	4761	3/4	1.65	1.65	.75	3/4	3/4
4121-150	4761	1	2.20	2.20	1.00	1	1
4122-165	4761	1 1/2	3.41	3.41	1.50	1 1/2	1 1/2
4122-171	4761	2	3.95	3.95	2.00	2	2



- All cast brass conforms to AWWA Standard C800 (ASTM B-62, UNS C83600 – 85-5-5-5).
- Flare tube nut has large hex wrenching surfaces and long tube support body.
- Designed for use with potable water.
- Materials meet or exceed A.W.W.A. standard C-800.

A.Y. McDONALD CONSIDERS THE INFORMATION ON THIS ASSEMBLY DRAWING CORRECT WHEN PUBLISHED. ITEM AND OPTION AVAILABILITY, INCLUDING SPECIFICATIONS, ARE SUBJECT TO CHANGE WITHOUT NOTICE. PLEASE VERIFY THAT PRODUCT INFORMATION IS CURRENT.

PREPARED FOR: _____

SUBMITTED BY: _____

DATE: _____

(4120-146.Spec-Serv.Ftng&Coup.)

A.Y. McDONALD MFG. CO. • P.O. BOX 508 • DUBUQUE, IA 52004-0508
800-292-2737 • FAX 800-832-9296 • sales@aymcdonald.com • www.aymcdonald.com