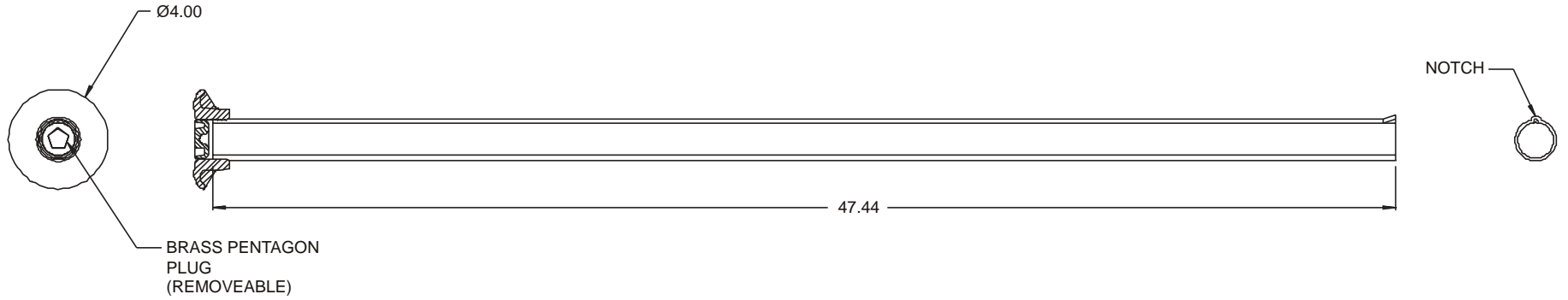
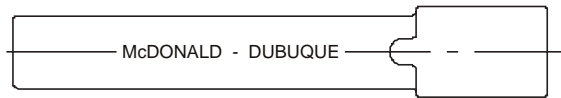
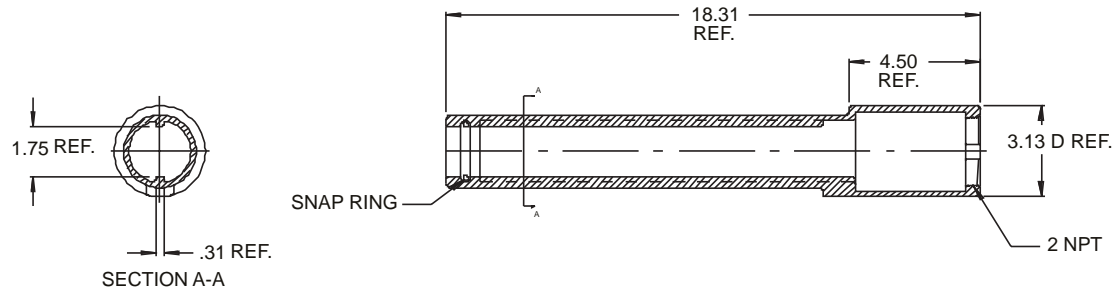




SUBMITTAL DATA

5615 CURB BOXES



■ Materials meet or exceed A.W.W.A. standard C-800-01.

A.Y. McDONALD CONSIDERS THE INFORMATION ON THIS ASSEMBLY DRAWING CORRECT WHEN PUBLISHED. ITEM AND OPTION AVAILABILITY, INCLUDING SPECIFICATIONS, ARE SUBJECT TO CHANGE WITHOUT NOTICE. PLEASE VERIFY THAT PRODUCT INFORMATION IS CURRENT.

THIS PRINT IS THE PROPERTY OF A.Y. McDONALD MFG. CO., DUBUQUE, IOWA AND IS LOANED SUBJECT TO RETURN UPON DEMAND. IT IS ISSUED WITH THE EXPRESSED AGREEMENT THAT IT WILL NOT BE ISSUED DIRECTLY OR INDIRECTLY IN ANY WAY DETRIMENTAL TO OUR INTERESTS. THE ACCEPTANCE OF THIS DRAWING WILL BE CONSTRUED AS AN ACCEPTANCE OF THE FOREGOING AGREEMENT.

A.Y. McDONALD MFG. CO. • P.O. BOX 508 • DUBUQUE, IA 52004-0508
800-292-2737 • FAX 800-832-9296 • sales@aymcdonald.com • www.aymcdonald.com

SUBMITTED BY: