

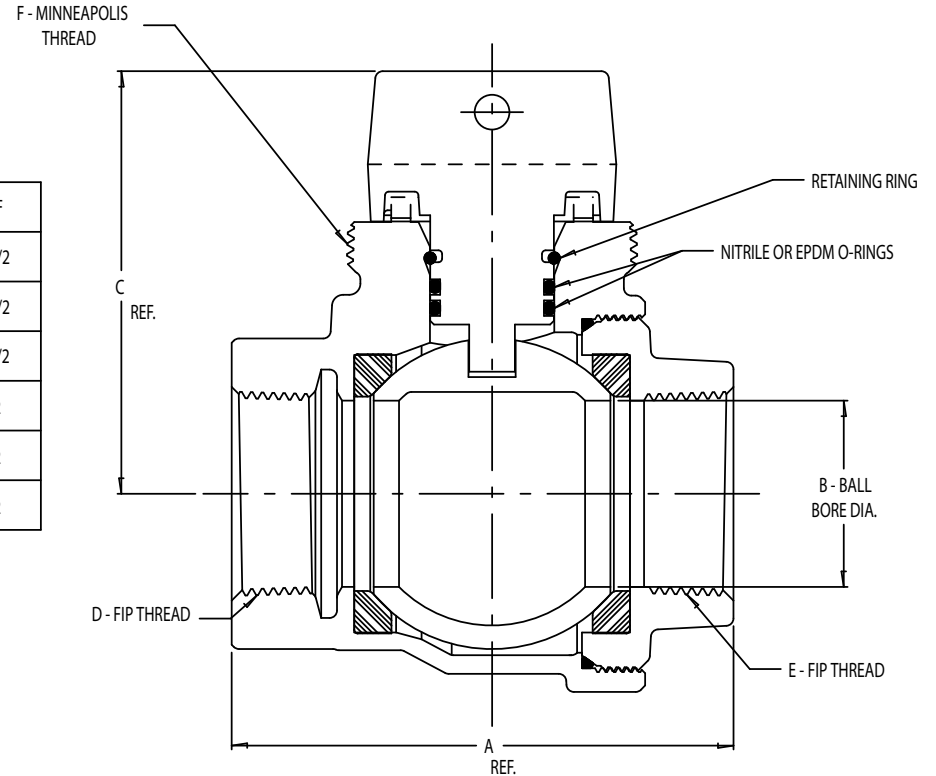


SUBMITTAL DATA

6105 CURB STOPS - BALL STYLE

A. Y. McDONALD CONSIDERS THE INFORMATION ON THIS ASSEMBLY DRAWING CORRECT WHEN PUBLISHED. ITEM AND OPTION AVAILABILITY, INCLUDING SPECIFICATIONS, ARE SUBJECT TO CHANGE WITHOUT NOTICE. PLEASE VERIFY THAT PRODUCT INFORMATION IS CURRENT.

| PART NO. | MODEL | SIZE | A | B | C | D | E | F |
|----------|-------|-----------------------|------|------|------|-------|-------|-------|
| 4129-191 | 6105 | 3/4 | 2.84 | .75 | 2.43 | 3/4 | 3/4 | 1 1/2 |
| 4129-192 | 6105 | 1 | 3.47 | 1.00 | 2.65 | 1 | 1 | 1 1/2 |
| 4149-335 | 6105 | 1 1/4 X 1 X 1 1/4 | 4.21 | 1.00 | 2.65 | 1 1/4 | 1 1/4 | 1 1/2 |
| 4132-276 | 6105 | 1 1/4 X 1 1/2 X 1 1/4 | 4.04 | 1.50 | 3.40 | 1 1/4 | 1 1/4 | 2 |
| 4129-116 | 6105 | 1 1/2 | 4.30 | 1.50 | 3.40 | 1 1/2 | 1 1/2 | 2 |
| 4129-122 | 6105 | 2 | 5.08 | 2.00 | 3.70 | 2 | 2 | 2 |



- All cast brass conforms to AWWA Standard C800-01 (ASTM B-62, UNS C83600 – 85-5-5-5).
- Valves are non-directional.
- Large full flat operating head.
- Encapsulated lugs under cap provide 90 open to close operation.
- Body design includes heavy wrench flats for proper installation.
- Blowout proof cap and stem design.
- Cap and stem include BUNA-N or EPDM o-ring seals.
- Threads conform to current AWWA C800-01 standard.

- Brass Teflon coated (PTFE) ball for use in potable water systems.
- Buna-N or EPDM rubber seals held and sealed in place with adhesive.
- 300 PSIG water working pressure.
- Minneapolis type curb box threads on top of valve.
- Designed for use with potable water.
- Materials meet or exceed A.W.W.A. standard C-800-01.

PREPARED FOR: _____

SUBMITTED BY: _____

DATE: _____

A.Y. McDONALD MFG. CO. • P.O. BOX 508 • DUBUQUE, IA 52004-0508
800-292-2737 • FAX 800-832-9296 • sales@aymcdonald.com • www.aymcdonald.com