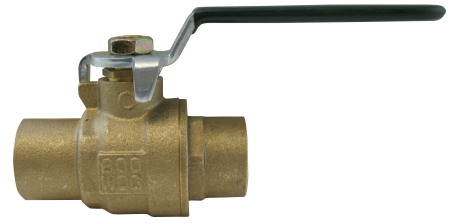


# SUBMITTAL DATA SHEET

## No-Lead Ball Valves Full Port Ball Valve - 72032S

SWT x SWT



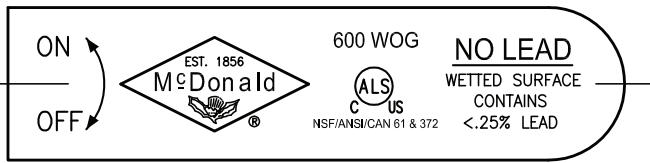
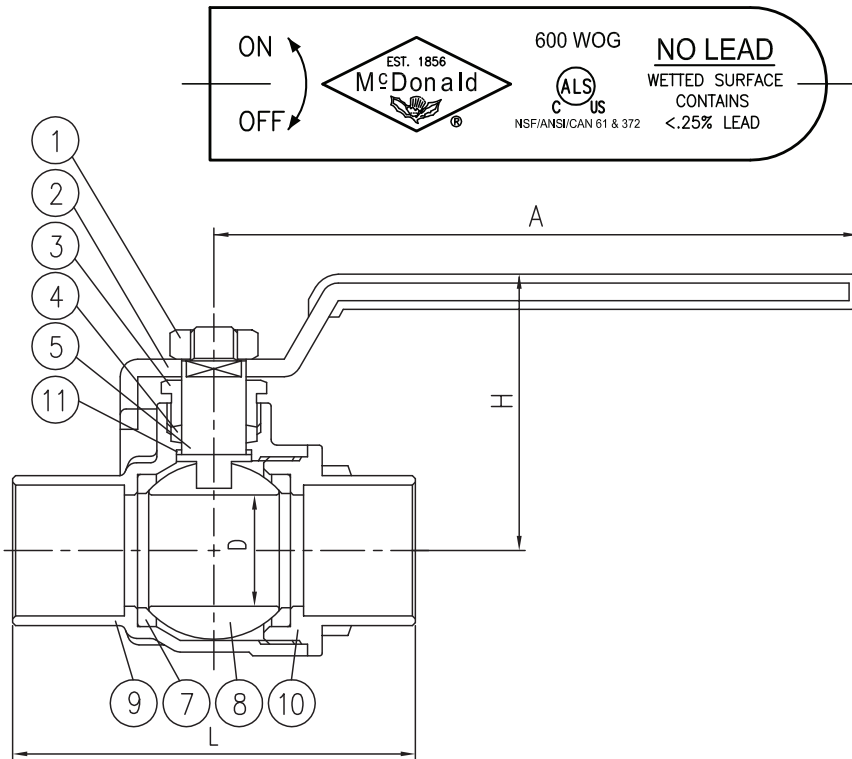
A.Y. McDonald Mfg. Co. No-Lead Ball Valves are constructed from heavy duty no-lead brass and are designed for use in potable water systems. Full port valves allow for maximum flow with minimum pressure drop.

### Dimensions

Size	L	H	D	A
3/8"	1.61	1.46	.39	3.15
1/2"	1.93	1.50	.50	3.15
3/4"	2.72	1.85	.75	4.33
1"	3.31	2.05	.98	4.33
1 1/4"	3.78	2.36	1.26	5.12
1 1/2"	4.29	2.56	1.50	5.12
2"	5.35	3.11	1.97	7.87
2 1/2"	6.1	3.50	2.48	7.87
3"	7.08	3.85	2.95	7.87

### Materials

No.	Part	Material
1	Nut	Steel
2	Handle	Steel
3	Stem Gland Screw	No-Lead Brass
4	Stem Packing	Teflon
5	Stem	No-Lead Brass
7	Ball Disc Packing	Teflon
8	Ball Disc	No-Lead Brass
9	Body	No-Lead Brass (C46400)
10	End piece	No-Lead Brass
11	Washer	Teflon



### SUBMITTAL INFORMATION

- Cold Working Pressure (CWP):  
3/8" - 2" 600 PSI  
2 1/2" - 3" 400 PSI
- Saturated Steam (WSP): 150 PSI
- Blow out proof stem
- Manufactured to MSS-SP-110
- Solder ends comply to ANSI B16.18



NSF/ANSI/CAN 61 & 372

NO-LEAD: The weighted average of the wetted surface of this no-lead product contacted by consumable water contains less than one quarter of one percent (0.25%) lead.



**A.Y. McDonald Mfg. Co.**  
4800 Chavenelle Rd  
Dubuque, IA 52002

**Toll Free: 1-800-292-2737**  
sales@aymcdonald.com  
aymcdonald.com

A.Y. McDonald considers the information on this assembly drawing correct when published. Item and option availability, including specifications, are subject to change without notice.

Submitted by: