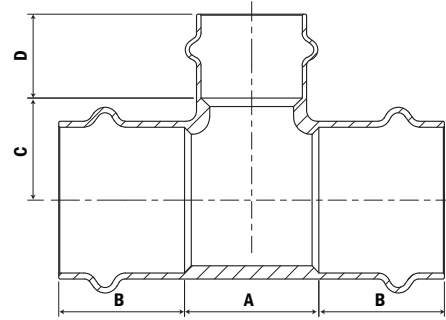
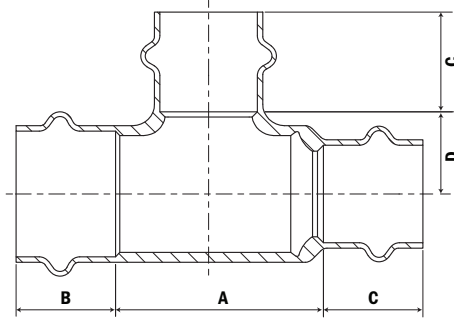


# SUBMITTAL DATA SHEET

No-Lead Press Fit  
Reducing Tee – 71930

Press Fit x Press Fit x Press Fit

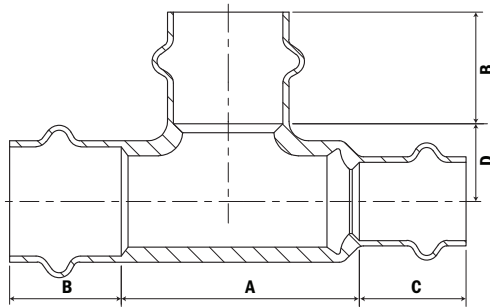


## Reducing Dimensions

Model No.	Size	A	B	C	D	Weight (Oz)	Ctn Qty	Mtr Qty
71930	3/4" x 1/2" x 1/2"	2.30"	0.87"	0.91"	0.63"	4.47	10	100
71930	1" x 3/4" x 3/4"	1.89"	0.91"	0.91"	0.75"	6.77	5	50

## Dimensions

Model No.	Size	A	B	C	D	Weight (Oz)	Ctn Qty	Mtr Qty
71930	3/4" x 1/2"	1.37"	0.91"	0.62"	0.75"	4.33	5	100
71930	1" x 1/2"	1.73"	0.94"	0.78"	0.91"	5.85	5	50
71930	1" x 3/4"	1.73"	0.94"	0.78"	0.91"	7.55	5	50
71930	1 1/4" x 1"	1.73"	1.02"	0.86"	0.94"	8.53	1	20
71930	1 1/2" x 1/2"	0.94"	1.41"	1.14"	0.86"	11.46	1	25
71930	1 1/2" x 3/4"	1.18"	1.41"	1.02"	0.91"	12.66	1	25
71930	1 1/2" x 1"	1.53"	1.41"	1.15"	0.94"	13.22	1	25
71930	2" x 1"	1.50"	1.57"	1.37"	0.94"	17.77	1	10
71930	2" x 1 1/2"	2.28"	1.57"	1.37"	1.41"	21.65	1	10



## Dimensions

Model No.	Size	A	B	C	D	Weight (Oz)	Ctn Qty	Mtr Qty
71930	3/4" x 1/2" x 3/4"	1.93"	0.91"	0.87"	0.63"	4.23	10	100

## SUBMITTAL INFORMATION

- Patented leak detection technology allows for excellent visual indication of non-pressed joints prior to testing
- Compatible with multiple Press Fit tools for 2" and under
- EPDM O-ring
- Designed for hydrostatic water pressure up to 230 PSI (16 bar)
- Designed for temperature range of -4°F to 200°F
- Press Fit fittings are suitable with ASTM B88 K, L, & M hard or soft copper tube
- IAMPO PS 117 - 2012 ael / TiL-MSE-13 C2003
- Section 1417 (d) of the Safe Drinking Water Act
- ANSI/NSF 61-G, ANSI/NSF 372



NO-LEAD: The weighted average of the wetted surface of this no-lead product contacted by consumable water contains less than one quarter of one percent (0.25%) lead.



A.Y. McDonald Mfg. Co.  
4800 Chavenelle Rd  
Dubuque, IA 52002

Toll Free: 1-800-292-2737  
sales@aymcdonald.com  
aymcdonald.com

A.Y. McDonald considers the information on this assembly drawing correct when published. Item and option availability, including specifications, are subject to change without notice.

Submitted by: