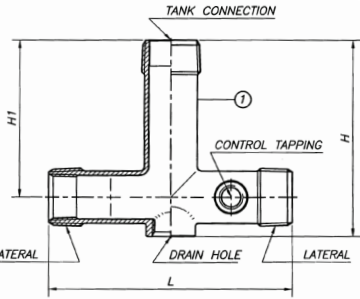


# SUBMITTAL DATA SHEET

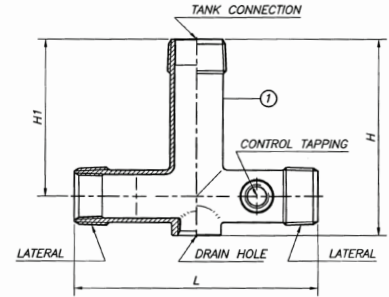
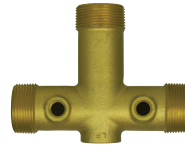
## No-Lead Brass Tank Tees



**72044**  
Single Drain Hole

Size	H	H1	L	Tank Connection	Lateral Size
1" x 11"	11"	10.2"	5.5"	1" MNPT	1" MNPT x 3/4" FNPT
1" x 14"	14"	13"	5.5"	1" MNPT	1" MNPT x 3/4" FNPT
1 1/4" x 14"	14"	12.8"	5.7"	1 1/4" MNPT	1 1/4" MNPT x 1" FNPT

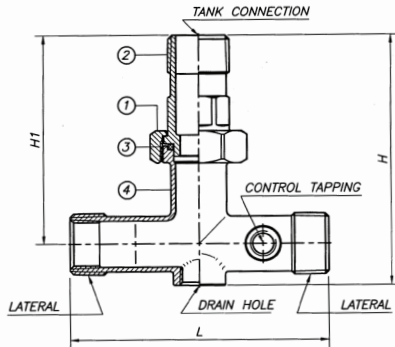
No.	Part	Material
1	Body	Brass (C46400 MOD)



**72044SP**  
Short Pattern with Single Drain Hole

Size	H	H1	L	Tank Connection/Lateral Size
1 1/4" x 4 1/2"	4.5"	3.3"	5.7"	1 1/4" MNPT x 1" FNPT

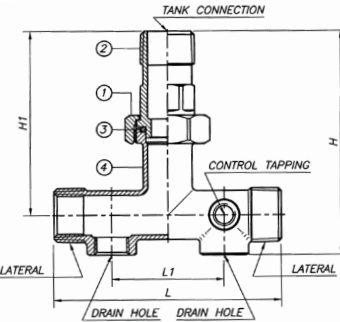
No.	Part	Material
1	Body	Brass (C46400 MOD)



**72046**  
Union with Single Drain Hole

Size	H	H1	L	Tank Connection	Lateral Size
1" x 11"	11"	9.9"	5.5"	1" MNPT	1" MNPT x 3/4" FNPT
1" x 14"	14"	13"	5.5"	1" MNPT	1" MNPT x 3/4" FNPT
1 1/4" x 14"	14"	13"	5.7"	1 1/4" MNPT	1 1/4" MNPT x 1" FNPT

No.	Part	Material	No.	Part	Material
1	Packing Nut	Brass (C85700)	3	O-Ring	Rubber (NBR) SN-719F
2	Nipple	Brass (C46400 MOD)	4	Body	Brass (C46400 MOD)



**72047**  
Union with Double Drain Hole

Size	H	H1	L	L1	Tank Connection	Lateral Size
1" x 11"	11"	9.9"	5.5"	2.7"	1" MNPT	1" MNPT x 3/4" FNPT
1" x 14"	14"	13"	5.5"	2.7"	1" MNPT	1" MNPT x 3/4" FNPT
1 1/4" x 14"	14"	13"	5.7"	2.7"	1 1/4" MNPT	1 1/4" MNPT x 1" FNPT

No.	Part	Material	No.	Part	Material
1	Packing Nut	Brass (C85700)	3	O-Ring	Rubber (NBR) SN-719F
2	Nipple	Brass (C46400 MOD)	4	Body	Brass (C46400 MOD)

NO-LEAD: The weighted average of the wetted surface of this no-lead product contacted by consumable water contains less than one quarter of one percent (0.25%) lead.



**A.Y. McDonald Mfg. Co.**  
4800 Chavenelle Rd  
Dubuque, IA 52002

**Toll Free: 1-800-292-2737**  
sales@aymcdonald.com  
aymcdonald.com

A.Y. McDonald considers the information on this assembly drawing correct when published. Item and option availability, including specifications, are subject to change without notice.

Submitted by: