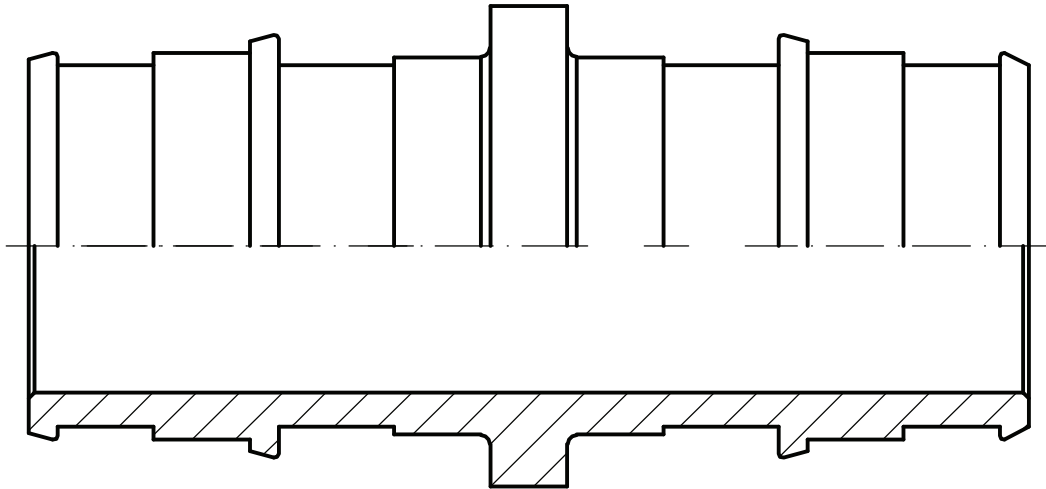


SUBMITTAL DATA SHEET

No-Lead
Brass Expansion Pex Coupling - 72300EX

Expansion Pex x Expansion Pex



SUBMITTAL INFORMATION

- Available Sizes: 3/8", 1/2", 1/2" x 3/8", 3/4", 3/4" x 1/2", 1" and 1" x 3/4"
- Material: C46500
- Pex end conforms to ASTM F1960
- Pressure Rating: 150 PSI



NO-LEAD: The weighted average of the wetted surface of this no-lead product contacted by consumable water contains less than one quarter of one percent (0.25%) lead.



A.Y. McDonald Mfg. Co.
4800 Chavenelle Rd
Dubuque, IA 52002

Toll Free: 1-800-292-2737
sales@aymcdonald.com
aymcdonald.com

A.Y. McDonald considers the information on this assembly drawing correct when published. Item and option availability, including specifications, are subject to change without notice.

Submitted by: