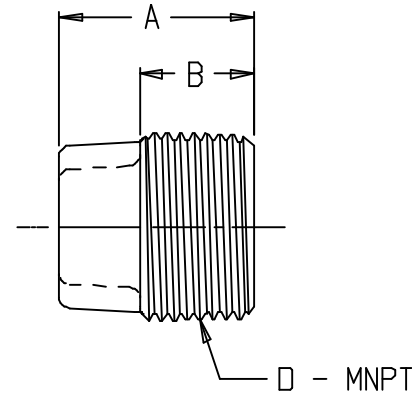
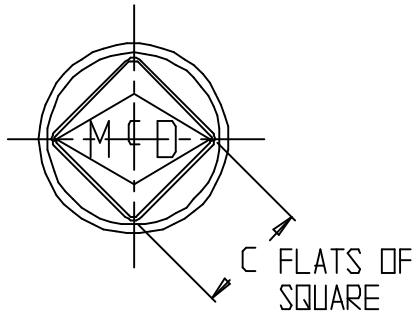


# SUBMITTAL DATA SHEET

NL Service Fitting – 73208S

MNPT



| MODEL  | SIZE  | A    | B    | C    | D     |
|--------|-------|------|------|------|-------|
| 73208S | 1/2   | 1.40 | 1.03 | .56  | 1/2   |
| 73208S | 3/4   | 1.07 | .63  | .63  | 3/4   |
| 73208S | 1 1/2 | 1.40 | .90  | 1.06 | 1 1/2 |
| 73208S | 2     | 1.40 | .90  | 1.13 | 2     |

## SUBMITTAL INFORMATION

- Manufactured in compliance with ANSI/AWWA C800 (latest revision)
- Brass components in contact with potable water conform to ASTM B584, UNS C89833 (latest revision) and identified with “NL”
- Certified to NSF/ANSI 61 and NSF/ANSI 372
- Brass components not in contact with potable water conform to ASTM B62 and ASTM B584, UNS C83600 -85-5-5-5 (latest revision)
- Large wrench flats provided for proper installation



**A.Y. McDonald Mfg. Co.**  
4800 Chavenelle Rd  
Dubuque, IA 52002

**Toll Free: 1-800-292-2737**  
sales@aymcdonald.com  
[aymcdonald.com](http://aymcdonald.com)

A.Y. McDonald considers the information on this assembly drawing correct when published. Item and option availability, including specifications, are subject to change without notice.

**Submitted by:**