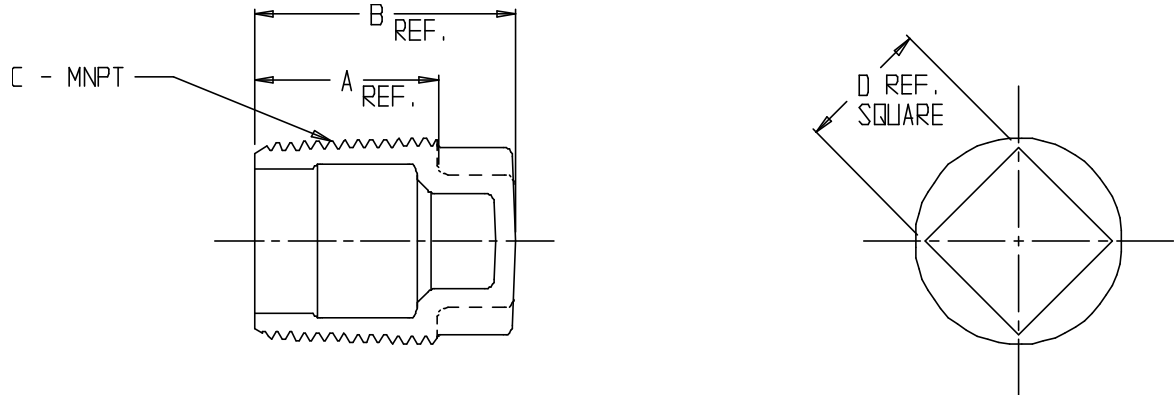


SUBMITTAL DATA SHEET

NL Service Fitting – 73208

MNPT



MODEL	SIZE	A	B	C	D
73208	1/2	1.03	1.40	1/2"	.56
73208	3/4	1.10	1.62	3/4"	.63
73208	1	1.19	1.69	1"	.86
73208	1 1/4	1.36	1.94	1 1/4"	.94
73208	1 1/2	1.50	2.00	1 1/2"	1.06
73208	2	1.50	2.00	2"	1.13

SUBMITTAL INFORMATION

- Manufactured in compliance with ANSI/AWWA C800 (latest revision)
- Brass components in contact with potable water conform to ASTM B584, UNS C89833 (latest revision) and identified with "NL"
- Certified to NSF/ANSI 61 and NSF/ANSI 372
- Brass components not in contact with potable water conform to ASTM B62 and ASTM B584, UNS C83600 -85-5-5-5 (latest revision)
- Large wrench flats provided for proper installation



A.Y. McDonald Mfg. Co.
4800 Chavenelle Rd
Dubuque, IA 52002

Toll Free: 1-800-292-2737
sales@aymcdonald.com
aymcdonald.com

A.Y. McDonald considers the information on this assembly drawing correct when published. Item and option availability, including specifications, are subject to change without notice.

Submitted by: