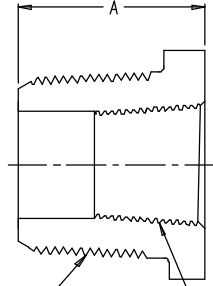
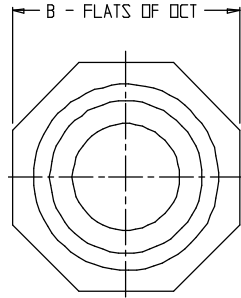


SUBMITTAL DATA SHEET

NL Service Fitting – 747011

AWWA/CC x FAWWA/CC



C - AWWA/CC SIZE

D - FAWWA/CC SIZE

MODEL	SIZE	A	B	C	D
747011	3/4 X 1/2	1.58	1.63	3/4	1/2
747011	1 X 3/4	1.66	1.63	1	3/4
747011	1 1/4 X 3/4	1.84	2.25	1 1/4	3/4
747011	1 1/4 X 1	1.84	2.25	1 1/4	1
747011	1 1/2 X 3/4	1.97	2.25	1 1/2	3/4
747011	1 1/2 X 1	1.97	2.25	1 1/2	1
747011	2 X 3/4	2.09	2.75	2	3/4
747011	2 X 1	2.09	2.75	2	1
747011	2 X 1 1/4	2.09	2.75	2	1 1/4
747011	2 X 1 1/2	2.09	2.75	2	1 1/2

SUBMITTAL INFORMATION

- Manufactured in compliance with ANSI/AWWA C800 (latest revision)
- Brass components in contact with potable water conform to ASTM B584, UNS C89833 (latest revision) and identified with “NL”
- Certified to NSF/ANSI 61 and NSF/ANSI 372
- Brass components not in contact with potable water conform to ASTM B62 and ASTM B584, UNS C83600 -85-5-5-5 (latest revision)
- Large wrench flats provided for proper installation



A.Y. McDonald Mfg. Co.
4800 Chavenelle Rd
Dubuque, IA 52002

Toll Free: 1-800-292-2737
sales@aymcdonald.com
aymcdonald.com

A.Y. McDonald considers the information on this assembly drawing correct when published. Item and option availability, including specifications, are subject to change without notice.

Submitted by: