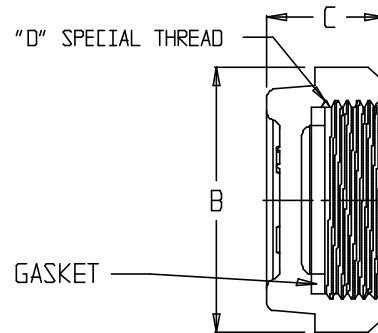
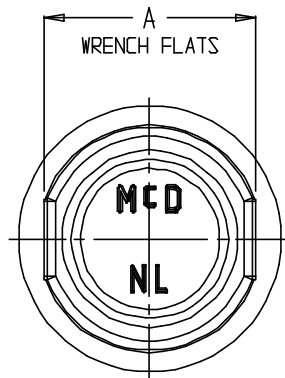
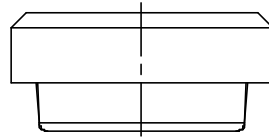


# SUBMITTAL DATA SHEET

NL Service Fitting – 74742LFCAP

Lead Corp Cap



MODEL	SIZE	A	B	C	D
74742LFCAP	5/8	1.50	2.20	1.12	1.68 - 12 SPCL
74742LFCAP	3/4	1.50	2.20	1.12	3/4 - 12 SPCL
74742LFCAP	1	2.50	2.50	.88	1 - 12 SPCL

## SUBMITTAL INFORMATION

- Manufactured in compliance with ANSI/AWWA C800 (latest revision)
- Brass components in contact with potable water conform to ASTM B584, UNS C89833 (latest revision) and identified with “NL”
- Certified to NSF/ANSI 61 and NSF/ANSI 372
- Brass components not in contact with potable water conform to ASTM B62 and ASTM B584, UNS C83600 -85-5-5-5 (latest revision)
- Large wrench flats provided for proper installation



**A.Y. McDonald Mfg. Co.**  
4800 Chavenelle Rd  
Dubuque, IA 52002

**Toll Free: 1-800-292-2737**  
sales@aymcdonald.com  
[aymcdonald.com](http://aymcdonald.com)

A.Y. McDonald considers the information on this assembly drawing correct when published. Item and option availability, including specifications, are subject to change without notice.

**Submitted by:**