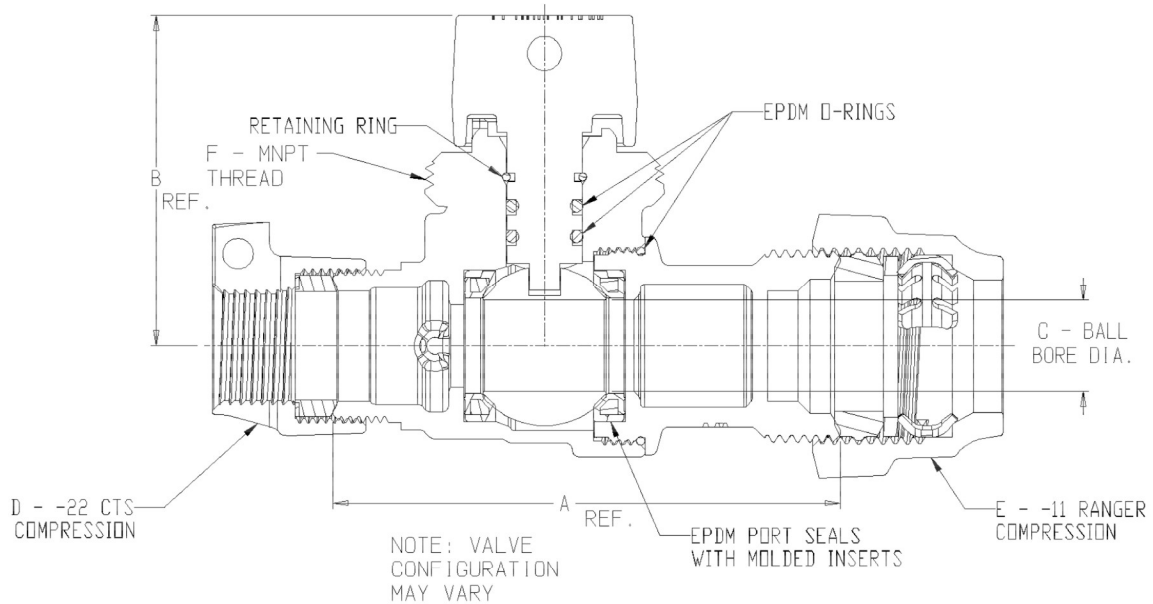


SUBMITTAL DATA SHEET



NL Ball Style Curb Stop – 76104-11-22

-22 CTS Compression x -11 Ranger Compression



| MODEL | SIZE | A | B | C | D | E | PIPE/TUBE SIZE RANGE (in.) | F |
|-------------|-----------|------|------|------|-----|-----|----------------------------|-------|
| 76104-11-22 | 3/4 | 4.16 | 2.71 | .75 | 3/4 | 3/4 | .871-1.089 | 1 1/2 |
| 76104-11-22 | 3/4x3/4x1 | 5.28 | 2.71 | .75 | 1 | 3/4 | .871-1.089 | 1 1/2 |
| 76104-11-22 | 1 | 4.48 | 2.65 | 1.00 | 1 | 1 | 1.120-1.399 | 1 1/2 |

SUBMITTAL INFORMATION

- Manufactured in compliance with ANSI/AWWA C800 (latest revision)
- Brass components in contact with potable water conform to ASTM B584, UNS C89833 (latest revision) and identified with “NL”
- Certified to NSF/ANSI 61 and NSF/ANSI 372
- Brass components not in contact with potable water conform to ASTM B62 and ASTM B584, UNS C83600 -85-5-5-5 (latest revision)
- PTFE coated brass ball
- Valve rated for 300 PSIG water pressure, end connections not to exceed rated pipe pressures.
- Blow out proof EPDM port seals
- End piece joint sealed with an EPDM o-ring and thread locker
- Insert stiffeners required on all flexible plastic connections



A.Y. McDonald Mfg. Co.
4800 Chavenelle Rd
Dubuque, IA 52002

Toll Free: 1-800-292-2737
sales@aymcdonald.com
aymcdonald.com

A.Y. McDonald considers the information on this assembly drawing correct when published. Item and option availability, including specifications, are subject to change without notice.

Submitted by: