

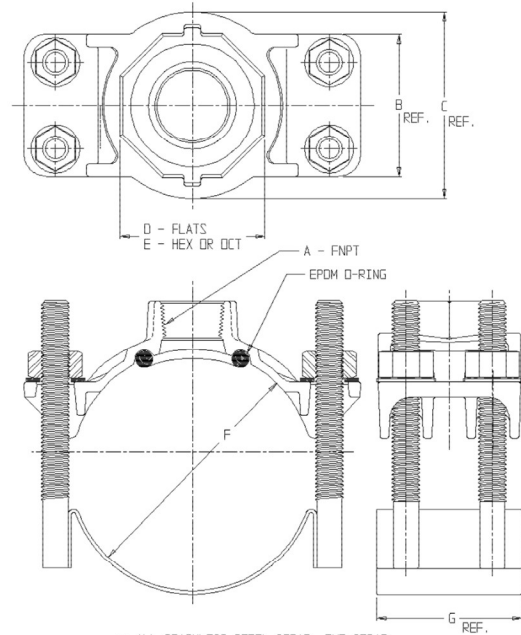
# SUBMITTAL DATA SHEET

## SS Strap Saddle – 3846U

PVC x FNPT



| MODEL | SIZE       | A     | B    | C    | D    | E   | F             | G    | PVC TYPE |
|-------|------------|-------|------|------|------|-----|---------------|------|----------|
| 3846U | 4 X 3/4    | 3/4   | 3.19 | 3.19 | 1.69 | HEX | 4.74 - 5.40   | 3.00 | C900     |
| 3846U | 4 X 1      | 1     | 3.19 | 3.19 | 1.69 | HEX | 4.74 - 5.40   | 3.00 | C900     |
| 3846U | 4 X 1 1/2  | 1 1/2 | 3.19 | 4.19 | 3.10 | DCT | 4.74 - 5.40   | 3.00 | C900     |
| 3846U | 4 X 2      | 2     | 3.19 | 4.19 | 3.10 | DCT | 4.74 - 5.40   | 3.00 | C900     |
| 3846U | 6 X 3/4    | 3/4   | 3.19 | 3.19 | 1.69 | HEX | 6.84 - 7.50   | 3.00 | C900     |
| 3846U | 6 X 1      | 1     | 3.19 | 3.19 | 1.69 | HEX | 6.84 - 7.50   | 3.00 | C900     |
| 3846U | 6 X 1 1/2  | 1 1/2 | 3.19 | 4.19 | 3.10 | DCT | 6.84 - 7.50   | 3.00 | C900     |
| 3846U | 6 X 2      | 2     | 3.19 | 4.19 | 3.10 | DCT | 6.84 - 7.50   | 3.00 | C900     |
| 3846U | 8 X 3/4    | 3/4   | 3.19 | 3.19 | 1.69 | HEX | 8.99 - 9.67   | 3.00 | C900     |
| 3846U | 8 X 1      | 1     | 3.19 | 3.19 | 1.69 | HEX | 8.99 - 9.67   | 3.00 | C900     |
| 3846U | 8 X 1 1/2  | 1 1/2 | 3.19 | 4.19 | 3.10 | DCT | 8.99 - 9.67   | 3.00 | C900     |
| 3846U | 8 X 2      | 2     | 3.19 | 4.19 | 3.10 | DCT | 8.99 - 9.67   | 3.00 | C900     |
| 3846U | 10 X 3/4   | 3/4   | 3.19 | 3.19 | 1.69 | HEX | 11.04 - 12.12 | 3.00 | C900     |
| 3846U | 10 X 1     | 1     | 3.19 | 3.19 | 1.69 | HEX | 11.04 - 12.12 | 3.00 | C900     |
| 3846U | 10 X 1 1/2 | 1 1/2 | 3.19 | 4.19 | 3.10 | DCT | 11.04 - 12.12 | 3.00 | C900     |
| 3846U | 10 X 2     | 2     | 3.19 | 4.19 | 3.10 | DCT | 11.04 - 12.12 | 3.00 | C900     |
| 3846U | 12 X 3/4   | 3/4   | 3.19 | 3.19 | 1.69 | HEX | 13.14 - 14.58 | 3.00 | C900     |
| 3846U | 12 X 1     | 1     | 3.19 | 3.19 | 1.69 | HEX | 13.14 - 14.58 | 3.00 | C900     |
| 3846U | 12 X 1 1/2 | 1 1/2 | 3.19 | 4.19 | 3.10 | DCT | 13.14 - 14.58 | 3.00 | C900     |
| 3846U | 12 X 2     | 2     | 3.19 | 4.19 | 3.10 | DCT | 13.14 - 14.58 | 3.00 | C900     |
| 3846U | 18 X 3/4   | 3/4   | 4.93 | 5.00 | 3.46 | DCT | 19.50 - 20.50 | 5.00 | C905     |
| 3846U | 18 X 1     | 1     | 4.93 | 5.00 | 3.46 | DCT | 19.50 - 20.50 | 5.00 | C905     |
| 3846U | 18 X 1 1/2 | 1 1/2 | 4.93 | 5.00 | 3.46 | DCT | 19.50 - 20.50 | 5.00 | C905     |
| 3846U | 18 X 2     | 2     | 4.93 | 5.00 | 3.46 | DCT | 19.50 - 20.50 | 5.00 | C905     |
| 3846U | 30 X 3/4   | 3/4   | 4.93 | 5.00 | 3.46 | DCT | 31.74 - 32.74 | 5.00 | C905     |
| 3846U | 30 X 1     | 1     | 4.93 | 5.00 | 3.46 | DCT | 31.74 - 32.74 | 5.00 | C905     |
| 3846U | 30 X 1 1/2 | 1 1/2 | 4.93 | 5.00 | 3.46 | DCT | 31.74 - 32.74 | 5.00 | C905     |
| 3846U | 30 X 2     | 2     | 4.93 | 5.00 | 3.46 | DCT | 31.74 - 32.74 | 5.00 | C905     |



\*\* ALL STAINLESS STEEL STRAP, ONE STRAP (WITH 4 STUDS WELDED ON) PER ASSEMBLY.

DRAWING MAY NOT RESEMBLE ACTUAL SADDLE CONFIGURATION

### SUBMITTAL INFORMATION

- Manufactured in compliance with ANSI/AWWA C800 (latest revision)
- Brass components conform to ASTM B62 and ASTM B584, UNS C83600 -85-5-5-5 (latest revision)
- Certified to NSF/ANSI 61
- 304L Stainless Steel strap(s) and studs. Stainless steel nuts (PTFE coated) and washers
- EPDM o-ring
- Pipe and tap size, and thread type identified on saddle
- Outlet boss with large wrench flats



**A.Y. McDonald Mfg. CO.**  
4800 Chavenelle Rd  
Dubuque, IA 52002

**Toll Free: 1-800-292-2737**  
sales@aymcdonald.com  
[aymcdonald.com](http://aymcdonald.com)

A.Y. McDonald considers the information on this assembly drawing correct when published. Item and option availability, including specifications, are subject to change without notice.

**Submitted by:**