

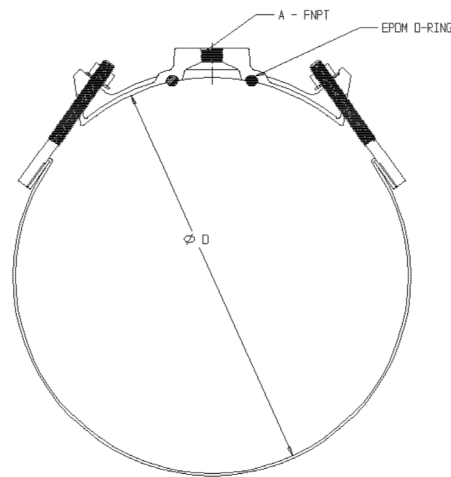
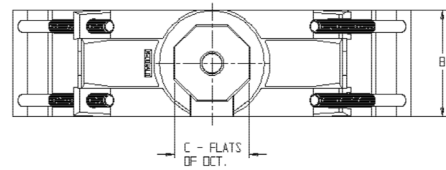
# SUBMITTAL DATA SHEET

## Wide SS Single Band Saddle – 3846A/3846B

C905 PVC x FNPT



MODEL	SIZE	A	B	C	D
3846A	14 X 3/4	3/4	5.00	3.46	15.30-16.25
3846B	14 X 3/4	3/4	5.00	3.46	16.30-17.25
3846A	14 X 1	1	5.00	3.46	15.30-16.25
3846B	14 X 1	1	5.00	3.46	16.30-17.25
3846A	14 X 1 1/2	1 1/2	5.00	3.46	15.30-16.25
3846B	14 X 1 1/2	1 1/2	5.00	3.46	16.30-17.25
3846A	14 X 2	2	5.00	3.46	15.30-16.25
3846B	14 X 2	2	5.00	3.46	16.30-17.25
3846A	16 X 3/4	3/4	5.00	3.46	17.40-18.40
3846B	16 X 3/4	3/4	5.00	3.46	18.50-19.25
3846A	16 X 1	1	5.00	3.46	17.40-18.40
3846B	16 X 1	1	5.00	3.46	18.50-19.25
3846A	16 X 1 1/2	1 1/2	5.00	3.46	17.40-18.40
3846B	16 X 1 1/2	1 1/2	5.00	3.46	18.50-19.25
3846A	16 X 2	2	5.00	3.46	17.40-18.40
3846B	16 X 2	2	5.00	3.40	18.50-19.25
3846A	20 X 3/4	3/4	5.00	3.46	21.20-22.20
3846B	20 X 3/4	3/4	5.00	3.46	22.50-23.50
3846A	20 X 1	1	5.00	3.46	21.20-22.20
3846B	20 X 1	1	5.00	3.46	22.50-23.50
3846A	20 X 1 1/2	1 1/2	5.00	3.46	21.20-22.20
3846B	20 X 1 1/2	1 1/2	5.00	3.46	22.50-23.50
3846A	20 X 2	2	5.00	3.46	21.20-22.20
3846B	20 X 2	2	5.00	3.46	22.50-23.50
3846A	24 X 3/4	3/4	5.00	3.46	23.80-24.80
3846B	24 X 3/4	3/4	5.00	3.46	25.60-26.50
3846A	24 X 1	1	5.00	3.46	23.80-24.80
3846B	24 X 1	1	5.00	3.46	25.60-26.50
3846A	24 X 1 1/2	1 1/2	5.00	3.46	23.80-24.80
3846B	24 X 1 1/2	1 1/2	5.00	3.46	25.60-26.50
3846A	24 X 2	2	5.00	3.46	23.80-24.80
3846B	24 X 2	2	5.00	3.46	25.60-26.50



### SUBMITTAL INFORMATION

- Manufactured in compliance with ANSI/AWWA C800 (latest revision)
- Brass components conform to ASTM B62 and ASTM B584, UNS C83600 -85-5-5-5 (latest revision)
- Certified to NSF/ANSI 61
- 304L Stainless Steel strap(s) and studs. Stainless steel nuts (PTFE coated) and washers
- EPDM o-ring
- Pipe and tap size, and thread type identified on saddle
- Outlet boss with large wrench flats



**A.Y. McDonald Mfg. CO.**  
4800 Chavenelle Rd  
Dubuque, IA 52002

**Toll Free: 1-800-292-2737**  
sales@aymcdonald.com  
[aymcdonald.com](http://aymcdonald.com)

A.Y. McDonald considers the information on this assembly drawing correct when published. Item and option availability, including specifications, are subject to change without notice.

**Submitted by:**