

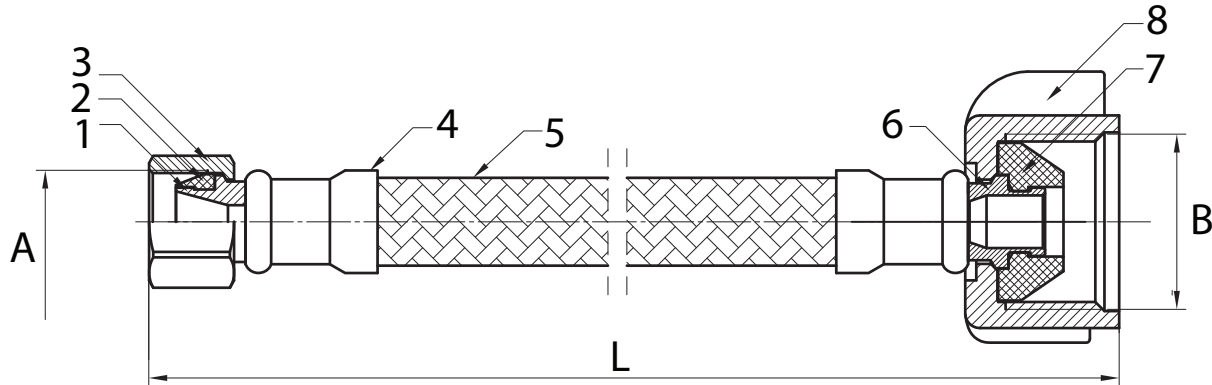
# SUBMITTAL DATA SHEET

No-Lead  
Stainless-Steel Toilet Supply Hose – 2107TP

COMP x Ballcock - Plastic Nut



A.Y. McDonald's extensive line of plumbing products include stainless-steel supply hoses. These quality, braided, stainless-steel, water flex lines are the perfect choice for connecting the toilet to the supply stop. They are made to bend freely, without kinking or crimping.



## Materials

| No. | Part          | Material |
|-----|---------------|----------|
| 1   | Insert        | Brass    |
| 2   | Washer        | EPDM     |
| 3   | Nut           | Brass    |
| 4   | Ferrule       | SS       |
| 5   | Tubing + Wire | PVC+SS   |
| 6   | Insert        | Brass    |
| 7   | Washer        | EPDM     |
| 8   | Nut           | Plastic  |

## Dimensions

| Part No. | Model No. | Size              | L   | A         | B             |
|----------|-----------|-------------------|-----|-----------|---------------|
| 4426-133 | 2107TP    | 3/8" x 7/8" x 9"  | 9"  | 3/8" COMP | 7/8" Ballcock |
| 4426-134 | 2107TP    | 3/8" x 7/8" x 12" | 12" | 3/8" COMP | 7/8" Ballcock |
| 4426-148 | 2107TP    | 3/8" x 7/8" x 16" | 16" | 3/8" COMP | 7/8" Ballcock |
| 4426-135 | 2107TP    | 3/8" x 7/8" x 20" | 20" | 3/8" COMP | 7/8" Ballcock |

## SUBMITTAL INFORMATION

- Corrosion Resistant
- The inside tubing is made of nylon reinforced vinyl
- Hand-tighten the plastic nut for a quick and easy connection
- NSF / ANSI 61 & NSF / ANSI 372
- ASME A112.18.6-2009 / CSA B125.6-09 (R2014)

**WARNING:** It is unlawful in **CALIFORNIA & VERMONT** (effective 1/1/2010); **MARYLAND** (effective 1/1/2012); **LOUISIANA** (effective 1/1/2013) and the **UNITED STATES OF AMERICA** (effective 1/4/2014) to use **THIS PRODUCT** in the installation or repair of any public water system or any plumbing in a facility or system that provides water for human consumption. The wetted surface area of **THIS PRODUCT** has a weighted average lead content greater than 0.25%.



**A.Y. McDonald Mfg. Co.**  
4800 Chavenelle Rd  
Dubuque, IA 52002

**Toll Free:** 1-800-292-2737  
sales@aymcdonald.com  
aymcdonald.com

A.Y. McDonald considers the information on this assembly drawing correct when published. Item and option availability, including specifications, are subject to change without notice.

**Submitted by:**