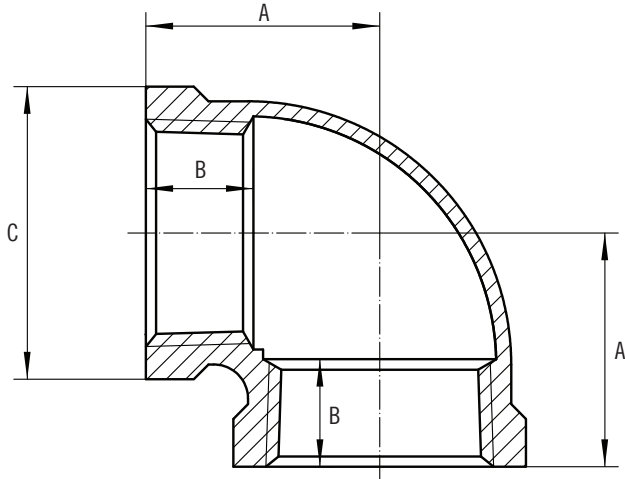


# SUBMITTAL DATA SHEET

## Stainless-Steel Threaded Fitting 90° Elbow – 2290SS



A.Y. McDonald Mfg. Co. Pipe Fittings are constructed from 304 stainless-steel and are rated for commercial, industrial and residential applications up to 150 PSI. Threads conform to MSS-SP114 standards and specifications.



Part No.	Model No.	Size	Dimensions A	Dimensions B	Dimensions C	Carton Qty	Weight Per Pcs.
4428-000	2290SS	1/8"	.81	.25	.75	50	.09
4428-001	2290SS	1/4"	.81	.32	.84	50	.11
4428-002	2290SS	3/8"	.93	.36	1.01	25	.15
4428-003	2290SS	1/2"	1.12	.43	1.20	60	.18
4428-004	2290SS	3/4"	1.31	.50	1.46	40	.43
4428-005	2290SS	1"	1.50	.58	1.77	15	.71
4428-006	2290SS	1 1/4"	1.75	.67	2.15	3	1.09
4428-007	2290SS	1 1/2"	1.93	.70	2.43	10	1.49
4428-008	2290SS	2"	2.25	.75	2.96	5	2.33
4428-009	2290SS	2 1/2"	2.68	.92	3.31	4	3.95
4428-010	2290SS	3"	3.06	.98	4.00	2	5.87

### SUBMITTAL INFORMATION

- **Material**  
304 Stainless-Steel
- **Rated**  
150 PSI max pressure
- **Fitting Dimensions**  
MSS SP-114

NO-LEAD: The weighted average of the wetted surface of this no-lead product contacted by consumable water contains less than one quarter of one percent (0.25%) lead.



**A.Y. McDonald Mfg. Co.**  
4800 Chavenelle Rd  
Dubuque, IA 52002

**Toll Free:** 1-800-292-2737  
sales@aymcdonald.com  
aymcdonald.com

A.Y. McDonald considers the information on this assembly drawing correct when published. Item and option availability, including specifications, are subject to change without notice.

**Submitted by:**