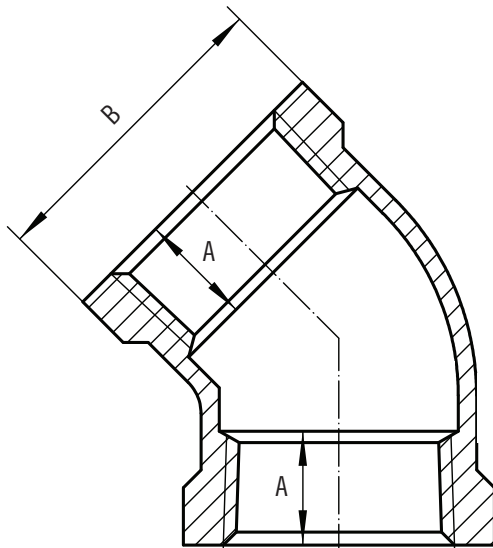


# SUBMITTAL DATA SHEET

## Stainless-Steel Threaded Fitting 45° Elbow – 2245SS



A.Y. McDonald Mfg. Co. Pipe Fittings are constructed from 304 stainless-steel and are rated for commercial, industrial and residential applications up to 150 PSI. Threads conform to MSS-SP114 standards and specifications.



Part No.	Model No.	Size	Dimensions A	Dimensions B	Carton Qty	Weight Per Pcs.
4428-012	2245SS	1/8"	.25	.75	50	.08
4428-013	2245SS	1/4"	.32	.84	50	.09
4428-014	2245SS	3/8"	.36	1.01	30	.15
4428-015	2245SS	1/2"	.43	1.20	70	.23
4428-016	2245SS	3/4"	.50	1.46	10	.36
4428-017	2245SS	1"	.58	1.77	5	.60
4428-018	2245SS	1 1/4"	.67	2.15	6	.85
4428-019	2245SS	1 1/2"	.70	2.43	1	1.17
4428-020	2245SS	2"	.75	2.96	4	1.96
4428-021	2245SS	2 1/2"	.92	3.31	2	3.20
4428-022	2245SS	3"	.98	4.00	2	4.72
4428-023	2245SS	4"	1.08	5.06	2	7.77

### SUBMITTAL INFORMATION

- **Material**  
304 Stainless-Steel
- **Fitting Dimensions**  
MSS SP-114
- **Rated**  
150 PSI max pressure

NO-LEAD: The weighted average of the wetted surface of this no-lead product contacted by consumable water contains less than one quarter of one percent (0.25%) lead.



**A.Y. McDonald Mfg. Co.**  
4800 Chavenelle Rd  
Dubuque, IA 52002

**Toll Free: 1-800-292-2737**  
sales@aymcdonald.com  
aymcdonald.com

A.Y. McDonald considers the information on this assembly drawing correct when published. Item and option availability, including specifications, are subject to change without notice.

**Submitted by:**