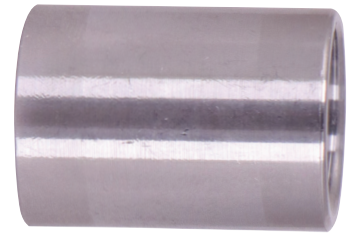
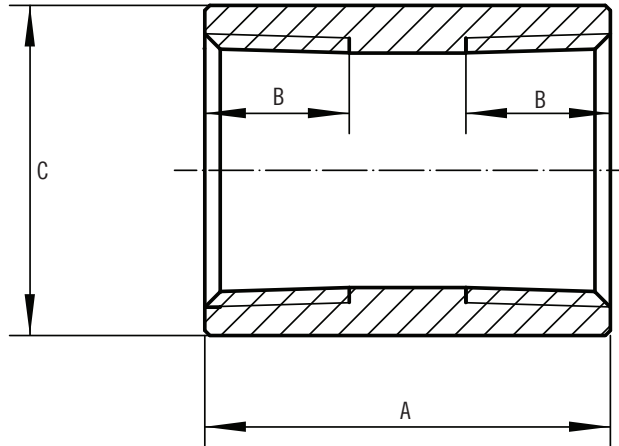


# SUBMITTAL DATA SHEET

## Stainless-Steel Threaded Fitting Coupling – 2210SS



A.Y. McDonald Mfg. Co. Pipe Fittings are constructed from 304 stainless-steel and are rated for commercial, industrial and residential applications up to 150 PSI. Threads conform to MSS-SP114 standards and specifications.



Part No.	Model No.	Size	Dimensions A	Dimensions B	Dimensions C	Carton Qty	Weight Per Pcs.
4428-072	2210SS	1/8"	1.00	.25	.75	100	.12
4428-073	2210SS	1/4"	1.00	.32	.84	60	.13
4428-074	2210SS	3/8"	1.12	.36	1.01	40	.19
4428-075	2210SS	1/2"	1.38	.43	1.20	50	.12
4428-076	2210SS	3/4"	1.50	.50	1.46	15	.46
4428-077	2210SS	1"	1.62	.58	1.77	25	.67
4428-078	2210SS	1 1/4"	2.00	.67	2.15	3	1.12
4428-079	2210SS	1 1/2"	2.12	.70	2.43	10	1.57
4428-080	2210SS	2"	2.50	.75	2.96	6	1.95
4428-081	2210SS	2 1/2"	2.87	.92	3.31	4	2.76
4428-082	2210SS	3"	3.18	.98	4.00	2	4.10
4428-083	2210SS	4"	3.68	1.08	5.06	4	6.33

### SUBMITTAL INFORMATION

- **Material**  
304 Stainless-Steel
- **Rated**  
150 PSI max pressure
- **Fitting Dimensions**  
MSS SP-114

NO-LEAD: The weighted average of the wetted surface of this no-lead product contacted by consumable water contains less than one quarter of one percent (0.25%) lead.



**A.Y. McDonald Mfg. Co.**  
4800 Chavenelle Rd  
Dubuque, IA 52002

**Toll Free: 1-800-292-2737**  
sales@aymcdonald.com  
aymcdonald.com

A.Y. McDonald considers the information on this assembly drawing correct when published. Item and option availability, including specifications, are subject to change without notice.

**Submitted by:**