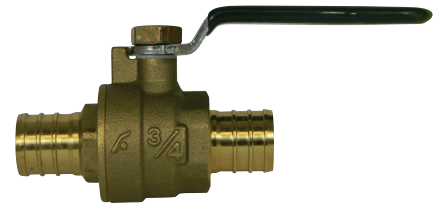


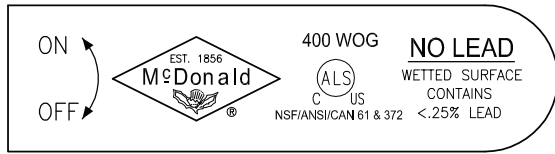
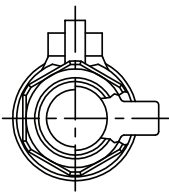
SUBMITTAL DATA SHEET

No-Lead Ball Valves - Heavy Pattern
Standard Port Ball Valve – 72030P

PEX x PEX

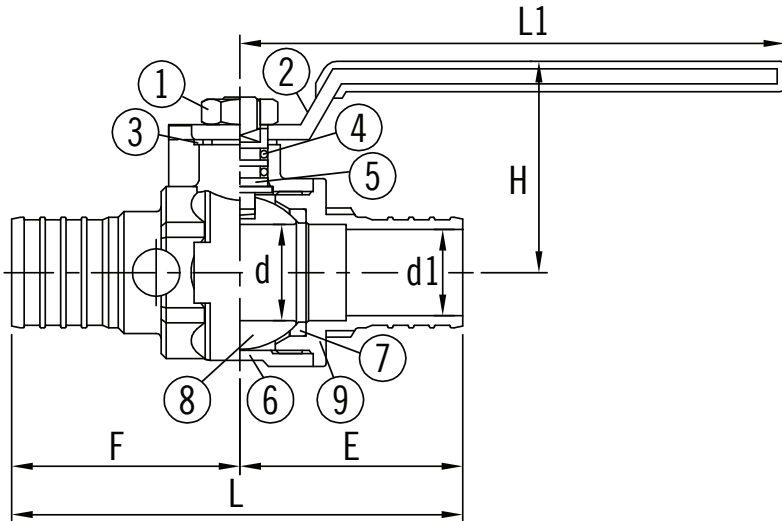


A.Y. McDonald Mfg. Co. No-Lead Ball Valves are constructed from heavy duty no-lead forged brass and can be used with potable water in commercial, industrial, and residential applications. This is a standard port valve with excellent flow characteristics.



Dimensions

Size	L	H	d	d1	L1	E	F
1/2"	2.48	1.30	0.39	0.32	2.95	1.38	1.10
3/4"	2.57	1.34	0.50	0.50	2.95	1.44	1.12
1"	3.50	1.61	0.75	0.67	4.25	1.73	1.77



Materials

No.	Part	Material
1	Nut	Steel
2	Handle	Steel
3	Washer	Teflon
4	O-Ring	Rubber
5	Stem	No-Lead Brass
6	Body	No-Lead Brass
7	Ball Disc Packing	Teflon
8	Ball Disc	No-Lead Brass
9	End Plug	No-Lead Brass

SUBMITTAL INFORMATION

- 150 WSP
- Available sizes: 1/2" - 1"
- 400 WOG
- Pex ends conform to ASTM F1807
- Blowout proof stem



NSF/ANSI/CAN 61 & 372

NO-LEAD: The weighted average of the wetted surface of this no-lead product contacted by consumable water contains less than one quarter of one percent (0.25%) lead.



A.Y. McDonald Mfg. Co.
4800 Chavenelle Rd
Dubuque, IA 52002

Toll Free: 1-800-292-2737
sales@aymcdonald.com
aymcdonald.com

A.Y. McDonald considers the information on this assembly drawing correct when published. Item and option availability, including specifications, are subject to change without notice.

Submitted by: