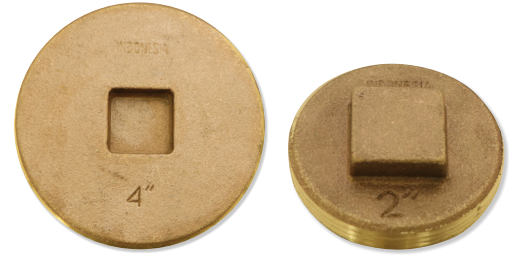
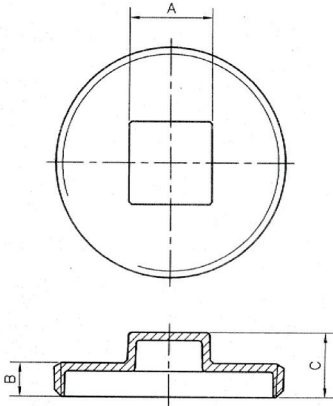


SUBMITTAL DATA SHEET

Brass Cleanout Plugs 2204 & 2204RSQH

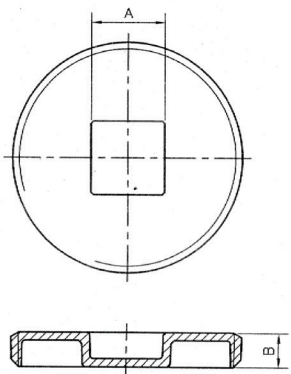


A.Y. McDonald Mfg. Co. cleanout plugs with raised and countersunk square heads are constructed of durable leaded brass. On the 2204RSQH, the raised head allows for easy tightening with pliers or a wrench. For the 2204, use a countersunk wrench to easily tighten or remove the cleanout plug.



Dimensions - Raised Square Head

Part No.	Model No.	Size	A	B	C
4427-088	2204RSQH	2"	1.00	0.43	0.78
4427-089	2204RSQH	2 1/2"	1.01	0.41	0.79
4427-090	2204RSQH	3"	1.24	0.45	0.82
4427-110	2204RSQH	3 1/2"	1.44	0.46	0.81
4427-111	2204RSQH	4"	1.34	0.47	0.83
4427-112	2204RSQH	5"	1.37	0.53	0.88
4427-113	2204RSQH	6"	1.38	0.56	1.02



Dimensions - Countersunk Square Head

Part No.	Model No.	Size	A	B
4427-091	2204	2"	0.80	0.43
4427-092	2204	2 1/2"	0.90	0.42
4427-093	2204	3"	1.14	0.47
4427-114	2204	3 1/2"	0.98	0.46
4427-079	2204	4"	1.15	0.46
4427-115	2204	5"	1.44	0.52
4427-080	2204	6"	1.23	0.64

SUBMITTAL INFORMATION



Non-Potable
Use Only



A.Y. McDonald Mfg. Co.
4800 Chavenelle Rd
Dubuque, IA 52002

Toll Free: 1-800-292-2737
sales@aymcdonald.com
aymcdonald.com

A.Y. McDonald considers the information on this assembly drawing correct when published. Item and option availability, including specifications, are subject to change without notice.

Submitted by: